

DELHI TRANSCO LTD.

STATE LOAD DISPATCH CENTER

PROGRESS REPORT

MAY - 2018

S. No.	CONTENTS	Page No.
1.	Salient Features of Delhi Power System	3
2.	Performance of Generating Stations within Delhi	4
3.	Details of Outage of Generating Stations within Delhi	5-10
4.	Allocation of Power to Delhi from unallocated quota of central sector	11
5.	Allocation of Power to Discoms	12
6.	Power Availability Demand Position of Delhi at the time of occurrence of Peak Demand	13
7.	Power Availability Demand Position of Delhi at the time of occurrence of Maximum Un-Restricted Demand	14
8.	Source wise scheduled drawl from grid and Availability within Delhi	15-18
9.	Shedding Details	19-23
10.	Load Curve for the Day of Peak Demand	24
11.	Load Curve for the day of occurrence of Maximum Un-Restricted Demand	25
12.	Load Curve for the day of Maximum Energy Consumed	26
13.	Load Curve for the day of Maximum Un-Restricted Energy Demand	27
14.	Load Duration Curve	28
15.	Frequency Analysis	29
16.	Voltage Profile for significant 220kV Sub-Stations	30
17.	Voltage Profile for significant 400kV Sub-Stations	31-32
18.	Details of Capacitors Installations in Delhi	33-41
19.	Tripping Details of 400/220 KV System in Delhi Power System	42-46
20.	Details of Under frequency Relay operations in Delhi Power System	47

1 **SALIENT FEATURES OF DELHI POWER SYSTEM**

Sr. No.	Features	MAY 2017	MAY 2018
1	Effective Generation Capacity within Delhi in MW		
	Rajghat Power House	135	135
	Gas Turbine	270	270
	Pragati Power Corporation Ltd.	330	330
	Badapur Thermal Power Station	705	705
	Rithala GT	108	108
	Bawana	1372	1372
	TOWMCL	16	16
	Total	2936	2936
2	Maximum Unrestricted Demand (MW)	6031	6452
	Date	16.05.17	30.05.18
	Time	15.32.19	15.42.30
3	Peak Demand met (MW)	6021	6442
	Date	16.05.17	30.05.18
	Time	15.32.19	15.42.30
4	Peak Availability (MW)	5945	6319
5	Shortage (-) / Surplus (+) in MW	(-) 76	(-) 123
6	Percentage Shortage (-) / Surplus (+)	(-) 1.26	(-) 1.91
7	Maximum Energy Consume in a day (Mus)	123.628	131.593
8	Energy Consumed during the month	3407.811	3415.160
9	Load Shedding in Mus		
A)	Due to Grid Restrictions		
i)	Under Frequency Relay Operations	0.000	0.000
ii)	Manual Load shedding from DTL S/Stns.	0.000	0.000
iii)	Load Shedding due to low frequency / Low Voltage / TTC/ATC Violation		
	NDPL	0.071	0.083
	BRPL	0.139	0.000
	BYPL	0.000	0.000
	NDMC	0.000	0.000
	MES	0.000	0.000
iv)	Due to transmission Constraints in Central Sector	0.000	0.000
	Total due to Grid Restriction	0.210	0.083
B)	Due to Constraints in System in Mus		
	DTL	0.723	1.740
	NDPL	0.197	0.171
	BRPL	0.908	1.615
	BYPL	0.130	0.129
	NDMC	0.000	0.000
	MES	0.000	0.000
	Other Agencies	0.475	0.003
	Total	2.433	3.658
11	Grand Total in Mus	2.643	3.741

2. PERFORMANCE OF GENERATING STATIONS WITHIN DELHI DURING MAY 2018

A) For the month of May 2018

All Figures in MUs

S. No	Stations	Gross Generation	Aux. Consumption	Net Generation	Availability (%)	Backing Down
1.	RPH	0.000	0.231	-0.231	0.000	0.00
2.	GT	55.570	2.028	53.542	67.10	76.515
3.	PPCL	183.460	4.254	179.206	93.92	44.864
4.	BTPS	217.094	9.788	207.306	60.07	82.070
5.	Rithala	0.000	0.062	-0.062	0.00	0.00
6.	Bawana	327.046	11.679	315.367	58.03	261.393
7.	Towmcl	14.664	2.241	12.423	--	--
8.	EDWPCL	3.856	1.107	2.749	--	--
9.	DMSWL	12.898	2.351	10.547	--	--
	TOTAL	814.588	33.741	780.847	--	--

B) For the Year 2018-19 (Upto May 2018)

Power Station	Effective Capacity (MW)	Net Generation in MUs for May 2018	Availability (%) for May 2018	PLF (%) for May 2018	Cumulative Generation in MUs upto May 2018 for the year 2018-19	Cumulative Availability in % upto May 2018 for the year 2018-19	Cumulative PLF in % upto May 2018 for the year 2018-19
RPH	135	-0.231	0.000	-0.580	0.000	0.00	-0.300
GT	270	53.542	67.10	27.83	120.344	67.12	30.51
PPCL	330	179.206	93.92	75.08	328.062	80.51	68.19
BTPS	705	207.306	60.07	42.31	288.284	60.82	30.20
Rithala	108	-0.062	0.00	0.00	0.000	0.00	0.00
Bawana	1372	315.367	58.03	32.81	646.363	57.22	32.39
Towmcl	16	12.423	--	--	29.055	--	--
EDWPCL	--	2.749	--	--	6.158	--	--
DMSWL	--	10.547	--	--	26.898	--	--
TOTAL	2936	780.847	--	--	1445.164	--	--

3 DETAILS OF OUTAGES OF GENERATING STNS. WITHIN DELHI W.E.F. APRIL 2018

RPH

Unit No	Capacity in MW	Outage		Synchronization		Reason of Outage
		Date	Time	Date	Time	
1	67.5	08.05.15	13.40	Contd.		Not in operation due to not meeting pollution norms.

Unit No	Capacity in MW	Outage		Synchronization		Reason of Outage
		Date	Time	Date	Time	
2	67.5	21.05.15	10.20	Contd.		Not in operation due to not meeting pollution norms.

(B) Gas Turbine

Unit No	Capacity in MW	Outage		Synchronization		Reason of Outage
		Date	Time	Date	Time	
1	30	1.4.18	00:00	4.4.18	06:44	Machine stopped as per SLDC message due to low demand on CCNG
		17.4.18	00:45	17.4.18	13:25	Machine tripped on Heavy jerk from the system and came on FSNL
		8.5.18	12:33	19.5.18	19:27	Machine stopped due to changeover to GT#5.and not started due to no demand from SLDC.
		23.5.18	08:24	23.5.18	15:02	Machine tripped on CRT got blank.
		26.5.18	12:23	27.5.18	19:25	Machine tripped on heavy jerk and there was a CW line leakage.The PTW cancelled on 27.05.2018 at 19:25.
		27.5.18	19:25	29.5.18	19:47	Machine could not be taken on bar due to no schedule from SLDC on CCNG

Unit No	Capacity in MW	Outage		Synchronization		Reason of Outage
		Date	Time	Date	Time	
2	30	17.4.18	00:45	17.4.18	03:40	Machine tripped on Heavy jerk from the system and came on FSNL
		18.4.18	05:40	18.4.18	07:49	Machine tripped on Exhaust Temperature High
		13.5.18	19:45	13.5.18	20:20	Machine came on FSNL due to jerk in system.
		16.5.18	03:18	16.5.18	04:00	Machine tripped on lub oil temp high.
		26.5.18	08:05	27.5.18	19:25	Machine tripped on TAD High. Later machine cleared and continued on no load to attend leakage in CW line .PTW cancelled on 27.05.2018 at 19:25 hrs.
		27.5.18	19:25	29.5.18	21:17	Machine could not be taken on bar due to no schedule from SLDC on CCNG

Unit No	Capacity in MW	Outage		Synchronization		Reason of Outage
		Date	Time	Date	Time	
3	30	1.4.18	00:00	4.4.18	07:20	Machine stopped as per SLDC message due to low demand on CCSpot
		9.4.18	13:45	13.4.18	13:32	Machine stopped as per SLDC message due to low demand on CCSpot. Started for Testing Black Start
		13.4.18	14:40	15.4.18	17:05	Machine stopped as per SLDC message due to low demand on CCSpot. Started for Trial RUN
		15.4.18	17:10	16.4.18	02:18	Machine stopped as per SLDC message due to low demand on CCSpot
		24.4.18	11:00	27.4.18	18:50	Machine stopped as per SLDC message due to low demand on CCSpot
		29.4.18	00:03	12.05.18	00:20	Machine stopped as per SLDC message due to low demand on CCSpot
		13.5.18	19:45	13.5.18	21:04	Machine came on FSNL due to jerk in system.
		14.5.18	00:00	21.5.18	21:50	Machine could not be taken on bar due to no schedule from SLDC on CCNG
		23.5.18	16:08	24.5.18	00:17	Machine could not be taken on bar due to no schedule from SLDC on CCNG
		26.5.18	16:35	27.5.18	19:25	Machine stopped to attend CW line leakage.The PTW cancelled on 27.05.2018 at 19:25.
		27.5.18	19:25	29.5.18	12:55	Machine could not be taken on bar due to no schedule from SLDC on CCNG
29.5.18	20:22	31.5.18	23:59	Machine could not be taken on bar due to no schedule from SLDC on CCNG		

Unit No	Capacity in MW	Outage		Synchronization		Reason of Outage
		Date	Time	Date	Time	
4	30	1.4.18	00:00	4.4.18	10:05	Machine stopped as per SLDC message due to low demand on OCSpot
		6.4.18	07:40	6.4.18	16:31	Machine tripped on Electrical trouble normal shutdown
		6.4.18	17:15	15.4.18	07:34	Machine stopped as per SLDC message due to low demand on CCSpot
		15.4.18	23:29	19.4.18	13:04	Machine tripped on Communication failed with IO Pack. The machine not started due to low schedule from SLDC
		20.4.18	08:58	30.4.18	23:59	Machine stopped as per SLDC message due to low demand on CCSpot
		1.5.18	00:00	12.5.18	21:06	Machine could not be taken on bar due to no schedule from SLDC on CCNG
		13.5.18	18:00	23.5.18	09:13	Machine could not be taken on bar due to no schedule from SLDC on CCNG
		23.5.18	11:50	24.5.18	12:47	Machine stopped as load could not be increased above 20 MW.
		24.5.18	12:47	26.5.18	08:44	Machine could not be taken on bar due to no schedule from SLDC on CCNG
		26.5.18	12:23	26.5.18	14:25	Machine tripped due to jerk in system and later taken to attend leakage in CW line..
		26.5.18	16:32	27.5.18	19:25	Machine stopped to attend CW line leakage.The PTW cancelled on 27.05.2018 at 19:25.
		27.5.18	19:25	28.5.18	12:18	Machine started after attend of CW line leakage
		28.5.18	14:51	29.5.18	12:21	Machine stopped as no schedule from SLDC .
29.5.18	19:52	31.5.18	23:59	Machine stopped as no schedule from SLDC .		

Unit No	Capacity in MW	Outage		Synchronization		Reason of Outage
		Date	Time	Date	Time	
5	30	1.4.18	00:00	29.4.18	10:01	Machine stopped as per SLDC message due to low demand on CCSpot
		29.4.18	13:45	29.4.18	18:10	Trial run
		29.4.18	22:14	9.5.18	12:19	Machine stopped as per SLDC message due to low demand on CCSpot
		12.5.18	17:25	13.5.18	13:03	Machine tripped on overspeed bolt trip alarm appeared.
		13.5.18	18:00	23.5.18	10:40	Machine could not be taken on bar due to low schedule from SLDC on CCNG
		23.5.18	23:08	25.5.18	16:03	Machine tripped on Exhaust overtemperature. Machine cleared on 25.05.2018 at 16:03 hrs.
		26.5.18	12:23	26.5.18	16:35	Machine tripped on heavy jerk and there was a CW line leakage.The PTW cancelled on 27.05.2018 at 19:25.
		26.5.18	16:35	27.5.18	19:25	Machine stopped to attend CW line leakage.The PTW cancelled on 27.05.2018 at 19:25.
		27.5.18	19:25	28.5.18	13:33	Machine started after CW line leakage attended.

Unit No	Capacity in MW	Outage		Synchronization		Reason of Outage
		Date	Time	Date	Time	
6	30	1.4.18	00:00	23.05.18	18.13	Machine under Major Inspection and out of DC
		23.5.18	18:30	24.5.18	15:14	Machine tripped on Generator journal bearing drain oil temp High and lub oil header temp alos high.
		26.5.18	16:35	27.5.18	19:25	Machine stopped to attend CW line leakage.The PTW cancelled on 27.05.2018 at 19:25.
		27.5.18	19:25	28.5.18	11:21	Machine started after CW line leakage attended.
		30.5.18	11:20	30.5.18	12:42	Machine tripped on Exhaust temperature high.

Unit No	Capacity in MW	Outage		Synchronization		Reason of Outage
		Date	Time	Date	Time	
STG -1	30	17.4.18	00:45	17.4.18	15:14	Machine tripped on Heavy jerk from the system
		26.4.18	16:52	26.4.18	18:44	Machine tripped due to tripping of 2 MVA Transformer-1
		1.5.18	00:28	1.5.18	02:16	Machine tripped due to tripping of 2 MVA Transformer.
		8.5.18	12:34	8.5.18	13:25	Tripped while slashing HRSG-1
		8.5.18	14:56	8.5.18	15:54	Tripped on class -A relay operated.
		13.5.18	19:45	13.5.18	21:41	Machine tripped due to jerk in system.
		16.5.18	03:02	16.5.18	04:52	Machine tripped due to jerk in system
		16.5.18	12:34	16.5.18	13:21	Machine tripped on Turbine speed very high I,e malfunctioning of output card of turbine.
		26.5.18	16:35	27.5.18	19:25	Machine stopped to attend CW line leakage.The PTW cancelled on 27.05.2018 at 19:25.
		27.5.18	19:25	30.5.18	01:16	Machine could not be taken on bar due to no schedule from SLDC

Unit No	Capacity in MW	Outage		Synchronization		Reason of Outage
		Date	Time	Date	Time	
STG -2	30	1.4.18	00:00	4.4.18	14:08	Machine stopped as per SLDC message due to low demand on CCSpot
		7.4.18	11:35	7.4.18	12:08	Machine tripped suddenly on control valve closing
		9.4.18	13:45	15.4.18	09:43	Machine stopped as per SLDC message due to low demand on CCSpot
		17.4.18	01:20	17.4.18	04:58	Machine tripped on all the parameters showing on blue band .
		18.4.18	08:01	18.4.18	08:35	Machine tripped on Turbine channel 1&2 operated alarm appeared.
		18.4.18	10:48	18.4.18	11:38	Machine tripped on hunting started of parameters on BCD.
		24.4.18	11:00	24.4.18	12:15	Machine stopped to attend oil leakage from servo motor line
		24.4.18	12:15	27.4.18	21:00	Machine cleared but not started due to no schedule from SLDC
		29.4.18	00:03	30.4.18	23:59	Machine stopped as per SLDC message due to low demand on CCSpot
		17.4.18	01:20	17.4.18	03:58	Machine tripped on all the parameters showing on blue band .
		1.5.18	00:00	12.5.18	03:58	Machine could not be taken on bar due to no schedule from SLDC
		13.5.18	19:45	13.5.18	20:30	Machine tripped on jerk in system.But later was not started due to low schedule from SLDC
		13.5.18	20:30	21.5.18	23:49	Machine could not be taken on bar due to no schedule from SLDC
		26.5.18	16:35	27.5.18	19:25	Machine stopped to attend CW line leakage.The PTW cancelled on 27.05.2018 at 19:25.
		27.5.18	19:25	29.5.18	14:33	Machine could not be taken on bar due to no schedule from SLDC
29.5.18	18:40	31.5.18	23:59	Machine stopped to attend water leakage from inlet line of Generator cooler.		

Unit No	Capacity in MW	Outage		Synchronization		Reason of Outage
		Date	Time	Date	Time	
STG -3	30	1.4.18	00:00	08.05.18	14.18	Machine under O/H
		8.5.18	14:28	8.5.18	15:52	Tripped on class -A relay operated.
		11.5.18	15:54	12.5.18	13:50	Machine tripped on calibration of woodward governor.Is under maintenance and STG-II taken on 12.05.2018 at 13:50 made available.
		12.5.18	13:50	23.5.18	13:30	Machine could not be taken on bar due to no schedule from SLDC
		23.5.18	23:08	24.5.18	19:23	Machine tripped on tripping of GT-5 & 6
		26.5.18	16:35	27.5.18	19:25	Machine stopped to attend CW line leakage.The PTW cancelled on 27.05.2018 at 19:25.
		27.5.18	19:25	28.5.18	14:18	Machine started after attend CW line leakage.
		28.5.18	17:46	28.5.18	18:13	Machine tripped on low vacuum.

(C) PRAGATI

Unit No	Capacity in MW	Outage		Synchronization		Reason of Outage
		Date	Time	Date	Time	
1	104	01.04.18	00.00	17.04.18	16.49	Stopped for HGPI
		03.05.18	12.46	04.05.18	15.07	Stopped due to low demand.
		04.05.18	16.10	11.05.18	14.16	Stopped due to low demand.
		13.05.18	19.50	13.05.18	20.14	Tripped due to grid disturbance
		16.05.18	03.01	16.05.18	04.49	
		26.05.18	12.24	26.05.18	13.22	
		26.05.18	13.56	26.05.18	14.42	

Unit No	Capacity in MW	Outage		Synchronization		Reason of Outage
		Date	Time	Date	Time	
2	104	17.04.18	18.47	18.04.18	12.45	Tripped on internal fault.
		18.04.18	12.45	19.04.18	06.24	Stopped due to low demand.
		03.05.18	07.19	03.05.18	09.07	Tripped due to grid disturbance
		26.05.18	13.56	26.05.18	14.38	Tripped due to grid disturbance

Unit No	Capacity in MW	Outage		Synchronization		Reason of Outage
		Date	Time	Date	Time	
STG	122	20.04.18	15.01	20.04.18	16.43	Tripped on internal fault.
		03.05.18	07.19	03.05.18	09.00	Tripped due to grid disturbance
		03.05.18	09.00	03.05.18	10.48	Internal problem
		03.05.18	16.51	03.05.18	17.50	Tripped on internal fault.
		26.05.18	13.56	26.05.18	15.39	Tripped due to grid disturbance
		26.05.18	17.59	26.05.18	19.41	Tripped due to grid disturbance

(D) BADARPUR THERMAL POWER STATION

Unit	Capacity in MW	Outage		Synchronization		Reason of Outage
		Date	Time	Date	Time	
1	95	01.04.18	00.00	31.05.18	00.00	Not in operation due to not meeting pollution norms

Unit	Capacity in MW	Outage		Synchronization		Reason of Outage
		Date	Time	Date	Time	
2	95	01.04.18	00.00	31.05.18	00.00	Not in operation due to not meeting pollution norms

Unit	Capacity in MW	Outage		Synchronization		Reason of Outage
		Date	Time	Date	Time	
3	95	01.04.18	00.00	31.05.18	00.00	Not in operation due to not meeting pollution norms

Unit	Capacity in MW	Outage		Synchronization		Reason of Outage
		Date	Time	Date	Time	
4	210	01.04.18	00.00	01.05.18	11.33	Not in operation due to not meeting pollution norms
		03.05.18	13.29	13.05.18	00.42	

Unit	Capacity in MW	Outage		Synchronization		Reason of Outage
		Date	Time	Date	Time	
5	210	01.04.18	00.00	09.04.18	07.54	Not in operation due to not meeting pollution norms

(E) BAWANA CCGT POWER STATION

Unit	Capacity in MW	Outage		Synchronization		Reason of Outage
		Date	Time	Date	Time	
1	216	21.04.18	0.00	23.04.18	07.00	Machine shut down for Filter Replacement so half of STG #1 was also not available.

Unit	Capacity in MW	Outage		Synchronization		Reason of Outage
		Date	Time	Date	Time	
2	216	NIL				

Unit	Capacity in MW	Outage		Synchronization		Reason of Outage
		Date	Time	Date	Time	
STG-1	254	02.04.18	06.49	02.04.18	11.58	Field breaker and Excitation Trip generated due to Regulation Supply fuse failure. Circuit checked, Power fuse changed and machine synchronised to further test the system.
		02.04.18	12.12	02.04.18	13.34	Again machine tripped on same fault. Fuse Barrier circuit replaced due to malfunctioning of micro switch contact.
		02.04.18	19.37	02.04.18	21.09	Field breaker and Excitation Trip generated due to Regulation Supply fuse failure. The circuit of PLC and fuse barrier checked and digital I/O card which generates this signal changed, machine synchronised.
		02.04.18	21.50	02.04.18	22.27	During HRSG paralleling STG tripped on Low Main steam temperature as HP Bypass#1 was not following reference properly, and loads on GTs were high for smooth paralleling.
		02.05.18	21.32	02.05.18	22.21	The cold gas temp control valve was fully open under full-module operation with cold gas temp around 43 deg. As GT #2 was stopped in accordance with the system demand, the load on STG #1 reduced to around 95 MW lowering the cold gas temp. With residual activities of isolation of HRSG #2 in progress, command was given to reduce the opening of temp-control-valve. The valve is designed for inching operation. However, the valve closed completely shutting of cooling water supply resulting in high cold-gas temp and leading to protection-trip on the same
		20.05.18	07.35	20.05.18	15.42	STG#1 Stopped due to Common Thermal Overload alarm appeared around 07:35 hrs. Intermittent flashover & smoke observed at Transformer cooling fan supply control -panel at site . All running cooling fans tripped & temperature indication at ECP disappeared. STG#1 Stopped/Tripped manually under the circumstances & panel supply made off.

Unit	Capacity in MW	Outage		Synchronization		Reason of Outage
		Date	Time	Date	Time	
3	216	17.04.18	00.00	30.04.18	23.59	Minor overhauling of Generator and Upgradation of GT#3 and BHM installation.

Unit	Capacity in MW	Outage		Synchronization		Reason of Outage
		Date	Time	Date	Time	
4	216	01.04.18	00.00	16.04.18	18.00	Machine taken out of DC for Planned maintenance.(Combustion inspection)
		22.05.18	15.33	22.05.18	16.15	GT#4 came on FSNL at 15:33 hrs. due to AVR fault and subsequent tripping of GCB. Unit was test synch at 16:20 hrs. but due to poor gas pipeline hydraulics GT#4 taken out of DC wef 16:15 hrs..
		22.05.18	16.15	24.05.18	12.30	Due to poor gas pipeline hydraulics GT#4 taken out of DC wef 16:15 hrs..
		24.05.18	21.46	25.05.18	23.59	GT#4 came on FSNL due to AVR fault and subsequent tripping of GCB. Unit was test synch at 22:33 hrs.and stopped at 22:44 hrs due to SLDC backdown.

Unit	Capacity in MW	Outage		Synchronization		Reason of Outage
		Date	Time	Date	Time	
STG-2	254	01.04.18	00.00	30.04.18	23.59	STG#2 tripped on Bucholz relay operated. Transformer is under revival.

(F) RITHALA POWER STATION

Unit	Capacity in MW	Outage		Synchronization		Reason of Outage
		Date	Time	Date	Time	
1	31.8	19.03.13	17:32	31.05.18	23.59	Stopped due to low demand and high frequency

Unit	Capacity in MW	Outage		Synchronization		Reason of Outage
		Date	Time	Date	Time	
2	31.8	07.06.13	22:41	31.05.18	23.59	Stopped due to low demand and high frequency

Unit	Capacity in MW	Outage		Synchronization		Reason of Outage
		Date	Time	Date	Time	
STG	31.8	07.06.13	22:38	31.05.18	23.59	Stopped due to low demand and high frequency

4 ALLOCATION OF POWER TO DELHI

A) Time block 00.00hrs. to 24.00hrs. @ 0% allocation from Unallocated Quota from 01.04.2017

Name of the Stn	Installed capacity	Total Un-allocated	Basic Allocation	Basic Allocation at periphery	Allocation out of Unallocated Quota	Allocation out of Un-allocation Quota at Delhi periphery	Total allocation at Delhi periphery
1	2	3	4	5	6	7	(8)=(5)+(7)
NTPC STATIONS							
Singrauli STPS	2000	300	150	130	0	0	130
Rihand-I	1000	150	100	87	0	0	87
Rihand Stage -II	1000	150	126	109	0	0	109
Rihand Stage -III	1000	150	132	115	0	0	115
ANTA GPS	419	63	44	41	0	0	41
Auriya GPS	663.36	99	72	67	0	0	67
Dadri GPS	829.78	129	91	85	0	0	85
Dadri NCTPS (Th)	840	0	756	657	0	0	657
Dadri NCTPS (Th) Stage-II	980	147	735	639	0	0	639
Unchahaar-I TPS	420	20	24	21	0	0	21
Unchahaar-II TPS	420	63	47	41	0	0	41
Unchahaar-III TPS	210	31	29	25	0	0	25
TOTAL	9782	1302	2306	2016	0	0	2016
NHPC							
Baira Suil HPS	180	0	20	19	0	0	19
Salal HPS	690	0	80	76	0	0	76
Tanakpur HEP	94	0	12	11	0	0	11
Chamera HEP	540	0	43	41	0	0	41
Chamera-II HEP	300	54	40	38	0	0	38
Chamera-III HEP	231	35	29	28	0	0	28
URI-I HEP	480	0	53	50	0	0	50
URI-II HEP	240	0	32	31	0	0	31
Sewa HEP	120	18	16	15	0	0	15
Dhaulti Ganga HEP	280	42	37	35	0	0	35
Dulhasti HEP	390	58	50	48	0	0	48
Parbati-III HEP	520	66	66	63	0	0	63
TOTAL	4065	272	479	455	0	0	455
NPC							
Narora APS	440	64	47	41	0	0	41
RAPP (C)	440	64	56	49	0	0	49
TOTAL	880	128	103	89	0	0	89
SJVNL							
Nathpa Jhakri HEP	1500	149	142	135	0	0	135
THDC							
Tehri Hydro	1000	99	63	60	0	0	60
Koteshwar HEP	400	40	39	37	0	0	37
TOTAL	1400	139	102	97	0	0	97
Total	17627	1990	3132	2793	0	0	2793
Allocation from ER and Tala HEP							
Farakka	1600	0	22	19	0	0	19
Kahalgaon	840	0	51	43	0	0	43
Talchar	1000	0	0	0	0	0	0
Tala HEP	1020	153	30	25	0	0	25
Kahalgaon-II	1500	0	157	131	0	0	131
Total ER	5960	153	261	217	0	0	217
Joint Venture							
Jhajjar TPS	1500	114	693	622	0	0	622
Ultra Mega Projects							
Sasan	3960	0	446	400	0	0	400
Grand Total	29047	2257	4531	4032	0	0	4032

5 ALLOCATION OF POWER TO DISCOMS

A) ALLOCATION OF POWER TO VARIOUS LICENCEES AS PER ORDER OF DERC AND DECISION OF GNCTD FOR ALLOCATION OF CENTRAL SECTOR STATIONS (DADRI THERMAL & BTPS) AND STATE SECTOR GENERATING STATIONS w.e.f. 06.08.2013.

(Allocation In %)

(A) 10.00hrs. to 17.00hrs.

SOURCES	LICENSEES					
	NDMC	MES	NDPL	BRPL	BYPL	TOTAL
1. Central Sector without Dadri (Th)	0	0	29.18	43.58	27.24	100.00
2. Dadri (Th)	16.63	0	24.22	36.86	22.39	100.00
3. BTPS	17.73	7.09	21.81	33.2	20.17	100.00
4. RPH	0	0	29.025	44.133	26.842	100.00
5. GT	0	0	29.02	44.16	26.82	100.00
6. Pragati	30.3	0	20.22	30.78	18.7	100.00
7. DVC	0	0	29.18	43.58	27.24	100.00
8. BAWANA CCGT*	7.30	1.82	20.688	30.888	19.304	80.00

(B) 00.00hrs. to 10.00hrs. and 17.00hrs. to 24.00hrs.

SOURCES	LICENSEES					
	NDMC	MES	NDPL	BRPL	BYPL	TOTAL
1. Central Sector without Dadri (Th)	0	0	29.18	43.58	27.24	100.00
2. Dadri (Th)	16.53	0	24.22	36.86	22.39	100.00
3. BTPS	17.73	7.09	21.81	33.2	20.17	100.00
4. RPH	0	0	29.025	44.133	26.842	100.00
5. GT	0	0	29.02	44.16	26.82	100.00
6. Pragati	30.3	0	20.22	30.78	18.7	100.00
7. DVC	0	0	29.18	43.58	27.24	100.00
8. BAWANA CCGT*	7.30	1.82	20.688	30.888	19.304	80.00

* 20% POWER OF BAWANA CCGT ALLOCATED TO HARYANA (10%) & PUNJAB (10%)

**6 POWER AVAILABILITY-DEMAND POSITION AT THE TIME OF PEAK DEMAND
MET DURING MAY 2018**

Date	Time of peak demand	Generation within Delhi										Import from the Grid	Schedule from the Grid	OD(-)/UD(+)	Demand met	Shedding	Un-Restricted Demand
		RP H	GT	PPCL	Rithal a	Bawana	Tow mcl	East Delhi	DMS WL	BTPS	Total						
(1)	(2)	(3)	(4)	(5)	(6)	(7)	(8)				(9)= (3) to (8)	(10)	(11)	(12)= (11)-(10)	(13)= (11)+(12)	(14)	(15)= (13)+(14)
1	00.00.21	0	71	262	0	536	19	-1	15	181	1083	4010	4114	-104	5093	0	5093
2	15.40.51	0	68	261	0	447	19	6	13	294	1108	4117	4145	-28	5225	0	5225
3	15.29.25	0	68	150	0	247	18	5	15	182	685	3922	3900	22	4607	0	4607
4	15.34.13	0	68	203	0	294	14	4	17	188	788	4075	4126	-51	4863	0	4863
5	23.31.33	0	69	150	0	305	17	6	19	188	754	4175	4171	4	4929	0	4929
6	00.01.36	0	70	152	0	286	18	6	19	193	744	4162	4125	37	4906	0	4906
7	22.36.59	0	69	150	0	303	17	6	17	183	745	4437	4267	170	5182	0	5182
8	15.26.15	0	50	150	0	295	19	5	18	160	697	4087	4034	53	4784	0	4784
9	14.47.20	0	70	147	0	295	17	7	18	174	728	4071	4098	-27	4799	0	4799
10	23.01.12	0	75	152	0	303	17	5	6	142	700	4199	4165	34	4899	0	4899
11	23.32.19	0	63	301	0	300	17	3	6	188	878	4420	4185	235	5298	4	5302
12	23.12.03	0	99	301	0	301	15	3	6	177	902	4508	4392	116	5410	6	5416
13	00.00.12	0	98	263	0	304	17	4	15	180	881	4463	4367	96	5344	0	5344
14	23.07.40	0	37	261	0	251	19	3	6	306	883	4063	3990	73	4946	0	4946
15	23.18.31	0	36	259	0	501	17	4	6	303	1126	4256	4129	127	5382	0	5382
16	23.28.51	0	34	271	0	454	15	5	14	317	1110	4240	4103	137	5350	0	5350
17	23.25.42	0	35	269	0	715	15	-2	19	346	1397	3990	3959	31	5387	0	5387
18	23.00.31	0	35	274	0	593	17	4	19	333	1275	4276	4299	-23	5551	0	5551
19	00.03.56	0	35	261	0	542	17	4	21	352	1232	4219	4159	60	5451	0	5451
20	23.35.17	0	63	271	0	443	17	4	12	311	1121	4220	4011	209	5341	0	5341
21	23.22.17	0	92	268	0	459	17	3	17	312	1168	4441	4408	33	5609	0	5609
22	22.59.00	0	103	296	0	572	15	3	16	381	1386	4463	4386	77	5849	7	5856
23	23.12.19	0	68	281	0	553	16	-1	17	359	1293	4785	4689	96	6078	0	6078
24	15.05.12	0	124	288	0	597	16	-1	4	355	1383	4646	4727	-81	6029	0	6029
25	15.42.02	0	108	260	0	475	11	-1	15	303	1171	4837	4725	112	6008	0	6008
26	00.00.51	0	139	260	0	549	9	-1	17	321	1294	4557	4336	221	5851	0	5851
27	23.42.65	0	0	266	0	643	13	4	18	337	1281	4678	4554	124	5959	7	5966
28	23.21.18	0	76	286	0	590	13	3	15	311	1294	4915	4781	134	6209	0	6209
29	22.54.11	0	121	292	0	731	18	3	11	345	1521	4764	4722	42	6285	8	6293
30	15.42.30	0	131	280	0	620	18	4	19	365	1437	5005	4882	123	6442	10	6452
31	15.33.23	0	130	280	0	710	14	6	14	348	1502	4915	4945	-30	6417	0	6417

POWER AVAILABILITY- DEMAND POSITION AT THE TIME OF MAXIMUM UNRESTRICTED DEMAND DURING MAY 2018

Date	Time of peak demand	Generation within Delhi										Import from the Grid	Schedule from the Grid	OD(-)/UD(+)	Demand met	Shedding	Un-Restricted Demand
		RP H	GT	PPCL	Rithala	Bawana	Towmcl	East Delhi	DMS WL	BTPS	Total						
(1)	(2)	(3)	(4)	(5)	(6)	(7)	(8)				(9)= (3) to (8)	(10)	(11)	(12)= (11) - (10)	(13)= (11)+ (12)	(14)	(15)= (13)+ (14)
1	00.00.21	0	71	262	0	536	19	-1	15	181	1083	4010	4114	-104	5093	0	5093
2	15.40.51	0	68	261	0	447	19	6	13	294	1108	4117	4145	-28	5225	0	5225
3	15.29.25	0	68	150	0	247	18	5	15	182	685	3922	3900	22	4607	0	4607
4	15.34.13	0	68	203	0	294	14	4	17	188	788	4075	4126	-51	4863	0	4863
5	23.31.33	0	69	150	0	305	17	6	19	188	754	4175	4171	4	4929	0	4929
6	00.01.36	0	70	152	0	286	18	6	19	193	744	4162	4125	37	4906	0	4906
7	22.36.59	0	69	150	0	303	17	6	17	183	745	4437	4267	170	5182	0	5182
8	15.26.15	0	50	150	0	295	19	5	18	160	697	4087	4034	53	4784	0	4784
9	14.47.20	0	70	147	0	295	17	7	18	174	728	4071	4098	-27	4799	0	4799
10	23.01.12	0	75	152	0	303	17	5	6	142	700	4199	4165	34	4899	0	4899
11	23.32.19	0	63	301	0	300	17	3	6	188	878	4420	4185	235	5298	4	5302
12	23.12.03	0	99	301	0	301	15	3	6	177	902	4508	4392	116	5410	6	5416
13	00.00.12	0	98	263	0	304	17	4	15	180	881	4463	4367	96	5344	0	5344
14	23.07.40	0	37	261	0	251	19	3	6	306	883	4063	3990	73	4946	0	4946
15	23.18.31	0	36	259	0	501	17	4	6	303	1126	4256	4129	127	5382	0	5382
16	23.28.51	0	34	271	0	454	15	5	14	317	1110	4240	4103	137	5350	0	5350
17	23.25.42	0	35	269	0	715	15	-2	19	346	1397	3990	3959	31	5387	0	5387
18	23.00.31	0	35	274	0	593	17	4	19	333	1275	4276	4299	-23	5551	0	5551
19	00.03.56	0	35	261	0	542	17	4	21	352	1232	4219	4159	60	5451	0	5451
20	23.35.17	0	63	271	0	443	17	4	12	311	1121	4220	4011	209	5341	0	5341
21	23.22.17	0	92	268	0	459	17	3	17	312	1168	4441	4408	33	5609	0	5609
22	22.59.00	0	103	296	0	572	15	3	16	381	1386	4463	4386	77	5849	7	5856
23	23.12.19	0	68	281	0	553	16	-1	17	359	1293	4785	4689	96	6078	0	6078
24	15.05.12	0	124	288	0	597	16	-1	4	355	1383	4646	4727	-81	6029	0	6029
25	15.42.02	0	108	260	0	475	11	-1	15	303	1171	4837	4725	112	6008	0	6008
26	00.00.51	0	139	260	0	549	9	-1	17	321	1294	4557	4336	221	5851	0	5851
27	23.42.65	0	0	266	0	643	13	4	18	337	1281	4678	4554	124	5959	7	5966
28	23.21.18	0	76	286	0	590	13	3	15	311	1294	4915	4781	134	6209	0	6209
29	22.54.11	0	121	292	0	731	18	3	11	345	1521	4764	4722	42	6285	8	6293
30	15.42.30	0	131	280	0	620	18	4	19	365	1437	5005	4882	123	6442	10	6452
31	15.33.23	0	130	280	0	710	14	6	14	348	1502	4915	4945	-30	6417	0	6417

SOURCEWISE SCHEDULED DRAWL FROM NORTHERN GRID AS WELL AS AVAILABILITY WITHIN DELHI FOR MAY 2018

A) AVAILABILITY FROM GENCO AND PRAGATI STNs. (all fig in MUs)

A (i) RPH	0.000
(ii) GT+STG	55.570
(iii) PRAGATI	183.460
(iv) RITHALA	0.000
(v) BAWANA CCGT	327.046
(vi) Timarpur – Okhla	14.664
EDWPCL	3.856
DMSWL	12.898
TOTAL	597.494
B) AVAILABILITY FROM BTPS	196.787
C) AUXILIARY CONSUMPTION OF GENERATING STNs. EXCLUDING BTPS	23.953
D) NET GENERATION AVAILABLE WITHIN DELHI(A+B-C)	770.328

B) SOURCE WISE SCHEDULED DRAWL FROM THE NORTHERN GRID

NAME OF THE STATION	AVAILABILITY AT POWER PLANT	AVAILABILITY AT DELHI PERIPHERY	ALLOCATION MADE BY NRLDC AT POWER PLANT	ALLOCATION MADE BY NRLDC AT DELHI PERIPHERY
B/SUIL	5.434	5.330	5.434	5.330
SALAL	36.373	35.945	36.373	35.945
SASAN	297.146	289.619	295.464	287.980
TANKAPUR	3.281	3.218	3.281	3.218
CHAMERA	15.198	15.019	15.198	15.019
CHAMERA -II	22.884	22.543	22.899	22.558
CHAMERA -III	14.782	14.609	14.792	14.609
DHAULIGANGA	11.066	10.935	11.066	10.935
SEWA -2	3.770	3.726	3.770	3.726
URI	39.004	38.340	39.116	38.449
URI-II	22.438	22.057	22.560	22.176
KOLDAM	0.000	0.000	0.000	0.000
KOTESHWAR	6.402	6.280	6.402	6.280
PARBATI3	5.038	4.953	5.038	4.953
RAMPUR	0.000	0.000	0.000	0.000
MUNDRA_UMPP	0.000	0.000	0.000	0.000
ANTA (GAS)	0.000	0.000	0.000	0.000
ANTA (RLNG)	9.421	9.125	0.000	0.000
ANTA (LIQUID)	8.531	8.260	0.000	0.000
DADRI (GAS)	10.000	9.884	3.233	3.195
DADRI (RLNG)	9.062	8.958	0.009	0.009
DADRI (LIQUID)	5.724	5.654	0.000	0.000
AURAIYA (GAS)	1.071	1.051	0.413	0.405
AURAIYA (RLNG)	8.127	7.973	0.009	0.009
AURAIYA (LIQUID)	22.586	22.151	0.020	0.020
SINGRAULI	85.483	83.203	82.035	79.847
SINGRAULI_HYDRO	0.380	0.370	0.380	0.370
RIHAND -I	60.882	59.258	57.592	56.054
RIHAND -II	56.960	55.444	54.778	53.321
RIHAND -III	92.229	89.769	85.118	82.849
UNCHAHAAR-I	15.954	15.648	14.512	14.234
UNCHAHAAR-II	31.820	31.208	28.711	28.160
UNCHAHAAR-III	10.724	10.514	9.743	9.553
UNCHAHAAR-IV	0.000	0.000	0.000	0.000
DADRI (TH)	489.629	483.863	354.430	350.260
DADRI (TH) STAGE-II	452.369	447.065	385.284	380.767
NAPP	20.996	20.590	20.996	20.590
RAPP 'B'	0.000	0.000	0.000	0.000
RAPP 'C'	37.421	36.237	37.421	36.237
NATHPA JHAKRI	47.264	46.673	47.177	46.588
DULASTI	36.715	36.283	36.715	36.283
TEHRI	8.007	7.854	8.007	7.854
JHAJJAR	261.069	258.007	228.615	225.942
KHELGAON	33.094	32.595	29.393	28.951

NAME OF THE STATION	AVAILABILITY AT POWER PLANT	AVAILABILITY AT DELHI PERIPHERY	ALLOCATION MADE BY NRLDC AT POWER PLANT	ALLOCATION MADE BY NRLDC AT DELHI PERIPHERY
KHELGAON-II	82.318	81.078	74.825	73.701
FARAKA	11.575	11.429	9.971	9.845
TALA	6.743	6.642	6.743	6.642
TALCHER	0.000	0.000	0.000	0.000
DVC	193.080	191.892	191.892	190.765
GUJRAT	0.141	0.140	0.140	0.139
DIKCHU	9.088	8.959	8.959	8.907
ORISSA	0.131	0.130	0.130	0.129
TELANGANA	0.162	0.160	0.160	0.159
ADHPL (KULLU)	6.291	6.207	6.207	6.171
MADHYA PRADESH	40.661	40.273	40.273	40.036
METHON POWER(NDPL)LT-06	183.774	182.627	182.627	181.543
DVC MEJIA (LT-08)(BYPL)	58.807	58.441	58.441	58.098
URS	0.080	0.078	0.080	0.078
JAMMU & KASHMIR	67.879	67.479	67.479	67.082
HIMACHAL PRADESH	256.484	253.039	253.039	251.539
GCEL (GURGAON)	9.270	9.214	9.214	9.158
MIZORAM	2.655	2.606	2.606	2.591
NAGALAND	0.277	0.275	0.275	0.273
DVC LT-9	0.000	0.000	0.000	0.000
HARYANA (LT-05)	41.321	41.079	41.079	40.837
SIKKIM	18.747	18.480	18.480	18.371
WEST BENGAL	0.462	0.460	0.460	0.457
ORISSA MT-20 JITPL -DVC	4.627	4.574	4.574	4.547
TAMILNAIDU	0.000	0.000	0.000	0.000
KARNATAKA	0.160	0.158	0.158	0.157
RAJASTHAN(SOLAR) BRPL-LT36	4.879	4.753	4.753	4.725
RAJASTHAN(SOLAR) BYPL - LT-35	5.111	4.978	4.978	4.949
RAJASTHAN(SOLAR) TPDDL LT-31	4.691	4.570	4.570	4.543
TO JHARKHAND	0.000	0.000	0.000	0.000
TO ANDHRA	-0.025	-0.025	-0.025	-0.025
TO MADHYA PRADESH	0.000	0.000	0.000	0.000
TO WEST BENGAL	-0.328	-0.330	-0.330	-0.332
TO SIKKIM	-0.118	-0.120	-0.120	-0.121
TO J&K	0.000	0.000	0.000	0.000
TO TAMILNADU	-0.286	-0.289	-0.289	-0.291
TO BIHAR	-0.099	-0.100	-0.100	-0.101
TO MEGHALAYA	0.000	0.000	0.000	0.000
TO MANIPUR	-0.059	-0.060	-0.060	-0.060
BTPS TO MP	0.000	0.000	0.000	0.000
TO HIMACHAL PRADESH	-1.464	-1.495	-1.495	-1.504
TO HARYANA	0.000	0.000	0.000	0.000
POWER EXCHANGE(IEX)	35.302	35.094	35.302	35.094
TO POWER EXCHANGE (IEX)	-233.578	-234.955	-233.578	-234.955
POWER EXCHANGE(PX)	0.000	0.000	0.000	0.000
TO POWER EXCHANGE (PX)	0.000	0.000	0.000	0.000
TO SHARE PROJECT (HARYANA)	-18.413	-18.523	-18.413	-18.523
TO SHARE PROJECT (PUNJAB)	-18.475	-18.585	-18.475	-18.585
TOTAL	3070.204	3020.545	2720.514	2678.713

C) AGENCY WISE BREAKUP OF ENERGY SCHEDULED DRAWL FROM THE GRID

NAME OF THE STATION	AVAILABILITY AT POWER PLANT	AVAILABILITY AT DELHI PERIPHERY	ALLOCATION MADE BY NRLDC AT POWER PLANT	ALLOCATION MADE BY NRLDC AT DELHI PERIPHERY
NTPC - NR	1370.951	1349.399	1076.267	1059.052
NTPC - ER	126.986	125.102	114.190	112.496
NHPC	215.983	212.958	216.241	213.201
NPC	58.417	56.827	58.417	56.827
SASAN	297.146	289.619	295.464	287.980
KOTESHWAR	6.402	6.280	6.402	6.280
MUNDRA_UMPP	0.000	0.000	0.000	0.000
NATHPA JHAKRI	47.264	46.673	47.177	46.588
TEHRI	8.007	7.854	8.007	7.854
TALA	6.743	6.642	6.743	6.642
JHAJJAR	261.069	258.007	228.615	225.942
TALCHER	0.000	0.000	0.000	0.000
RAJASTHAN SOLAR(BRPL)T-36	4.879	4.753	4.753	4.725
RAJASTHAN SOLAR(BYPL)T-35	5.111	4.978	4.978	4.949
RAJASTHAN SOLAR(TPDDL)T-31	4.691	4.570	4.570	4.543
DVC	193.080	191.892	191.892	190.765
GUJRAT	0.141	0.140	0.140	0.139
DIKCHU	9.088	8.959	8.959	8.907
ORISSA	0.131	0.130	0.130	0.129
TELANGANA	0.162	0.160	0.160	0.159
ADHPL (KULLU)	6.291	6.207	6.207	6.171
MADHYA PRADESH	40.661	40.273	40.273	40.036
METHON POWER (NDPL)-LT-06	183.774	182.627	182.627	181.543
DVC MEJIA (LT-08)(BYPL)	58.807	58.441	58.441	58.098
URS	0.080	0.078	0.080	0.078
JAMMU & KASHMIR	67.879	67.479	67.479	67.082
HIMACHAL PRADESH	256.484	253.039	253.039	251.539
GCEL (GURGAON)	9.270	9.214	9.214	9.158
MIZORAM	2.655	2.606	2.606	2.591
NAGALAND	0.277	0.275	0.275	0.273
DVC (FOR NDPL) LT-09	0.000	0.000	0.000	0.000
HARYANA (LT -05)	41.321	41.079	41.079	40.837
SIKKIM	18.747	18.480	18.480	18.371
WEST BENGAL	0.462	0.460	0.460	0.457
ORISSA MT-20 JITPL -DVC	4.627	4.574	4.574	4.547
TAMILNAIDU	0.000	0.000	0.000	0.000
KARNATAKA	0.160	0.158	0.158	0.157
POWER EXCHANGE(IEX)	35.302	35.094	35.302	35.094
POWER EXCHANGE(PX)	0.000	0.000	0.000	0.000
TOTAL	3343.049	3295.027	2993.400	2953.209

D) AGENCY WISE BREAKUP OF ENERGY SCHEDULED BY NRLDC FOR EXPORT TO OTHER UTILITIES FROM DTL

NAME OF THE STATION	AVAILABILITY AT POWER PLANT	AVAILABILITY AT PERIPHERY	ALLOCATION MADE BY NRLDC AT POWER PLANT	ALLOCATION MADE BY NRLDC AT POWER PERIPHERY
TO JHARKHAND	0.000	0.000	0.000	0.000
TO ANDHRA	-0.025	-0.025	-0.025	-0.025
TO MADHYA PRADESH	0.000	0.000	0.000	0.000
TO WEST BENGAL	-0.328	-0.330	-0.330	-0.332
TO J&K	0.000	0.000	0.000	0.000
TO SIKKIM	-0.118	-0.120	-0.120	-0.121
TO TAMILNADU	-0.286	-0.289	-0.289	-0.291
TO BIHAR	-0.099	-0.100	-0.100	-0.101
TO MEGHALAYA	0.000	0.000	0.000	0.000
TO MANIPUR	-0.059	-0.060	-0.060	-0.060
BTPS TO MP	0.000	0.000	0.000	0.000
TO HIMACHAL PRADESH	-1.464	-1.495	-1.495	-1.504
TO HARYANA	0.000	0.000	0.000	0.000
TO POWER EXCHANGE (IEX)	-233.578	-234.955	-233.578	-234.955
TO POWER EXCHANGE (PX)	0.000	0.000	0.000	0.000
TO SHARE PROJECT (HARYANA)	-18.413	-18.523	-18.413	-18.523
TO SHARE PROJECT (PUNJAB)	-18.475	-18.585	-18.475	-18.585
TOTAL	-272.845	-274.482	-272.886	-274.496
TOTAL SCHEDULED DRAWAL FROM THE GRID	3070.204	3020.545	2720.514	2678.713

TOTAL CONSUMPTION INCLUDING AUX. OF GENERATING STNs. EXCLUDING BTPS	3439.113
NET CONSUMPTION	3415.160
AVAILABILITY WITHIN DELHI	770.328
ACTUAL DRAWAL FROM THE GRID	2644.832
OVER DRAWAL(+)/UNDER DRAWAL(-) FROM THE GRID ON THE BASIS OF SCHEDULED ALLOCATION MADE BY NRLDC TO DELHI AT PERIPHERY	-33.881
LOAD SHEDDING	3.741
UNRESTRICTED DEMAND (GROSS)	3442.854
UNRESTRICTED DEMAND (NET)	3418.901
MAX. NET CONSUMPTION	131.593 ON 31.05.2018
MAX. LOAD SHEDDING	583MW ON 26.05.2018 AT 13.50HRS.
PEAK LOAD	Peak Demand during the month
DAY PEAK	6442MW AT 15.42.30 HRS ON 30.05.2018
EVENING PEAK	6365MW AT 23.30HRS ON 31.05.2018
P.L.F. OF GENCO AND PRAGATI STNs.	RPH GT PRAGATI RITHALA BAWANA Timarpur Okhla EDWPCL DMSWL
	0.00% 27.66% 74.72% 0.00% 32.06% 123.19% 43.19% 72.23%

SHEDDING DETAILS DURING THE MONTH OF MAY 2018.

ALL FIGURES IN MUs

DATE	No. of Under Freq. Relay Operated	Shedding due to under frequency relay operation in MUs					Shedding due to Grid Restrictions (Over drawal / low freq.)				
		BSES		NDPL	NDMC	TOTAL	BSES		NDPL	NDMC	MES
		BYPL	BRPL				BYPL	BRPL			
1	2	3	4	5	6	7=3 to 6	8	9	10	11	12
01.May.18	0	0.000	0.000	0.000	0.000	0.000	0.000	0.000	0.000	0.000	0.000
02.May.18	0	0.000	0.000	0.000	0.000	0.000	0.000	0.000	0.000	0.000	0.000
03.May.18	0	0.000	0.000	0.000	0.000	0.000	0.000	0.000	0.000	0.000	0.000
04.May.18	0	0.000	0.000	0.000	0.000	0.000	0.000	0.000	0.000	0.000	0.000
05.May.18	0	0.000	0.000	0.000	0.000	0.000	0.000	0.000	0.000	0.000	0.000
06.May.18	0	0.000	0.000	0.000	0.000	0.000	0.000	0.000	0.000	0.000	0.000
07.May.18	0	0.000	0.000	0.000	0.000	0.000	0.000	0.000	0.000	0.000	0.000
08.May.18	0	0.000	0.000	0.000	0.000	0.000	0.000	0.000	0.000	0.000	0.000
09.May.18	0	0.000	0.000	0.000	0.000	0.000	0.000	0.000	0.000	0.000	0.000
10.May.18	0	0.000	0.000	0.000	0.000	0.000	0.000	0.000	0.000	0.000	0.000
11.May.18	0	0.000	0.000	0.000	0.000	0.000	0.000	0.000	0.000	0.000	0.000
12.May.18	0	0.000	0.000	0.000	0.000	0.000	0.000	0.000	0.000	0.000	0.000
13.May.18	0	0.000	0.000	0.000	0.000	0.000	0.000	0.000	0.000	0.000	0.000
14.May.18	0	0.000	0.000	0.000	0.000	0.000	0.000	0.000	0.000	0.000	0.000
15.May.18	0	0.000	0.000	0.000	0.000	0.000	0.000	0.000	0.083	0.000	0.000
16.May.18	0	0.000	0.000	0.000	0.000	0.000	0.000	0.000	0.000	0.000	0.000
17.May.18	0	0.000	0.000	0.000	0.000	0.000	0.000	0.000	0.000	0.000	0.000
18.May.18	0	0.000	0.000	0.000	0.000	0.000	0.000	0.000	0.000	0.000	0.000
19.May.18	0	0.000	0.000	0.000	0.000	0.000	0.000	0.000	0.000	0.000	0.000
20.May.18	0	0.000	0.000	0.000	0.000	0.000	0.000	0.000	0.000	0.000	0.000
21.May.18	0	0.000	0.000	0.000	0.000	0.000	0.000	0.000	0.000	0.000	0.000
22.May.18	0	0.000	0.000	0.000	0.000	0.000	0.000	0.000	0.000	0.000	0.000
23.May.18	0	0.000	0.000	0.000	0.000	0.000	0.000	0.000	0.000	0.000	0.000
24.May.18	0	0.000	0.000	0.000	0.000	0.000	0.000	0.000	0.000	0.000	0.000
25.May.18	0	0.000	0.000	0.0001	0.000	0.000	0.000	0.000	0.000	0.000	0.000
26.May.18	0	0.000	0.000	0.000	0.000	0.000	0.000	0.000	0.000	0.000	0.000
27.May.18	0	0.000	0.000	0.000	0.000	0.000	0.000	0.000	0.000	0.000	0.000
28.May.18	0	0.000	0.000	0.000	0.000	0.000	0.000	0.000	0.000	0.000	0.000
29.May.18	0	0.000	0.000	0.000	0.000	0.000	0.000	0.000	0.000	0.000	0.000
30.May.18	0	0.000	0.000	0.000	0.000	0.000	0.000	0.000	0.000	0.000	0.000
31.May.18	0	0.000	0.000	0.000	0.000	0.000	0.000	0.000	0.000	0.000	0.000
TOTAL	0	0.000	0.000	0.000	0.000	0.000	0.000	0.000	0.083	0.000	0.000

Date	Shedding due to Transmission/Grid Constraints in Central Sector Stations / TTC / ATC VOILATION				DUE TO NEW GRID CODE REGULATION DEVIATION			Shedding due to Transmission/Grid Constraints in Central sector stations				Total 24=8 to 23	Total shedding due to grid restrictions 25=7+24
	BSES		NDPL	NDMC	BSES			TPDDL	NDMC				
	BYPL	BRPL			BYPL	BRPL	TPDDL			BYPL	BRPL		
	13	14	15	16	17	18	19	20	21	22	23		
01.May.18	0.000	0.000	0.000	0.000	0.000	0.000	0.000	0.000	0.000	0.000	0.000	0.000	0.000
02.May.18	0.000	0.000	0.000	0.000	0.000	0.000	0.000	0.000	0.000	0.000	0.000	0.000	0.000
03.May.18	0.000	0.000	0.000	0.000	0.000	0.000	0.000	0.000	0.000	0.000	0.000	0.000	0.000
04.May.18	0.000	0.000	0.000	0.000	0.000	0.000	0.000	0.000	0.000	0.000	0.000	0.000	0.000
05.May.18	0.000	0.000	0.000	0.000	0.000	0.000	0.000	0.000	0.000	0.000	0.000	0.000	0.000
06.May.18	0.000	0.000	0.000	0.000	0.000	0.000	0.000	0.000	0.000	0.000	0.000	0.000	0.000
07.May.18	0.000	0.000	0.000	0.000	0.000	0.000	0.000	0.000	0.000	0.000	0.000	0.000	0.000
08.May.18	0.000	0.000	0.000	0.000	0.000	0.000	0.000	0.000	0.000	0.000	0.000	0.000	0.000
09.May.18	0.000	0.000	0.000	0.000	0.000	0.000	0.000	0.000	0.000	0.000	0.000	0.000	0.000
10.May.18	0.000	0.000	0.000	0.000	0.000	0.000	0.000	0.000	0.000	0.000	0.000	0.000	0.000
11.May.18	0.000	0.000	0.000	0.000	0.000	0.000	0.000	0.000	0.000	0.000	0.000	0.000	0.000
12.May.18	0.000	0.000	0.000	0.000	0.000	0.000	0.000	0.000	0.000	0.000	0.000	0.000	0.000
13.May.18	0.000	0.000	0.000	0.000	0.000	0.000	0.000	0.000	0.000	0.000	0.000	0.000	0.000
14.May.18	0.000	0.000	0.000	0.000	0.000	0.000	0.000	0.000	0.000	0.000	0.000	0.000	0.000
15.May.18	0.000	0.000	0.000	0.000	0.000	0.000	0.000	0.000	0.000	0.000	0.000	0.083	0.083
16.May.18	0.000	0.000	0.000	0.000	0.000	0.000	0.000	0.000	0.000	0.000	0.000	0.000	0.000
17.May.18	0.000	0.000	0.000	0.000	0.000	0.000	0.000	0.000	0.000	0.000	0.000	0.000	0.000
18.May.18	0.000	0.000	0.000	0.000	0.000	0.000	0.000	0.000	0.000	0.000	0.000	0.000	0.000
19.May.18	0.000	0.000	0.000	0.000	0.000	0.000	0.000	0.000	0.000	0.000	0.000	0.000	0.000
20.May.18	0.000	0.000	0.000	0.000	0.000	0.000	0.000	0.000	0.000	0.000	0.000	0.000	0.000
21.May.18	0.000	0.000	0.000	0.000	0.000	0.000	0.000	0.000	0.000	0.000	0.000	0.000	0.000
22.May.18	0.000	0.000	0.000	0.000	0.000	0.000	0.000	0.000	0.000	0.000	0.000	0.000	0.000
23.May.18	0.000	0.000	0.000	0.000	0.000	0.000	0.000	0.000	0.000	0.000	0.000	0.000	0.000
24.May.18	0.000	0.000	0.000	0.000	0.000	0.000	0.000	0.000	0.000	0.000	0.000	0.000	0.000
25.May.18	0.000	0.000	0.000	0.000	0.000	0.000	0.000	0.000	0.000	0.000	0.000	0.000	0.000
26.May.18	0.000	0.000	0.000	0.000	0.000	0.000	0.000	0.000	0.000	0.000	0.000	0.000	0.000
27.May.18	0.000	0.000	0.000	0.000	0.000	0.000	0.000	0.000	0.000	0.000	0.000	0.000	0.000
28.May.18	0.000	0.000	0.000	0.000	0.000	0.000	0.000	0.000	0.000	0.000	0.000	0.000	0.000
29.May.18	0.000	0.000	0.000	0.000	0.000	0.000	0.000	0.000	0.000	0.000	0.000	0.000	0.000
30.May.18	0.000	0.000	0.000	0.000	0.000	0.000	0.000	0.000	0.000	0.000	0.000	0.000	0.000
31.May.18	0.000	0.000	0.000	0.000	0.000	0.000	0.000	0.000	0.000	0.000	0.000	0.000	0.000
TOTAL	0.000	0.000	0.000	0.000	0.000	0.000	0.000	0.000	0.000	0.000	0.000	0.083	0.083

Date	DUE TO T&D CONSTRAINTS IN DELHI SYSTEM								
	DTL					DISCOMS			
	BSES		NDPL	NDMC	MES	BSES		NDPL	NDMC
	BYPL	BRPL				BYPL	BRPL		
26	27	28	29	30	31	32	33	34	
01.May.18	0.000	0.000	0.000	0.000	0.000	0.000	0.002	0.000	0.000
02.May.18	0.000	0.009	0.000	0.000	0.000	0.000	0.038	0.014	0.000
03.May.18	0.007	0.000	0.005	0.000	0.000	0.002	0.010	0.016	0.000
04.May.18	0.000	0.000	0.000	0.000	0.000	0.000	0.009	0.001	0.000
05.May.18	0.012	0.000	0.000	0.000	0.000	0.000	0.005	0.000	0.000
06.May.18	0.000	0.000	0.000	0.000	0.000	0.000	0.004	0.000	0.000
07.May.18	0.002	0.000	0.024	0.000	0.000	0.006	0.122	0.005	0.000
08.May.18	0.000	0.000	0.085	0.000	0.000	0.000	0.136	0.002	0.000
09.May.18	0.002	0.000	0.032	0.013	0.000	0.000	0.033	0.017	0.000
10.May.18	0.000	0.000	0.000	0.000	0.000	0.000	0.009	0.000	0.000
11.May.18	0.0005	0.008	0.000	0.000	0.000	0.000	0.037	0.000	0.000
12.May.18	0.000	0.001	0.004	0.000	0.000	0.000	0.036	0.005	0.000
13.May.18	0.076	0.027	0.026	0.000	0.000	0.028	0.167	0.020	0.000
14.May.18	0.000	0.000	0.016	0.000	0.000	0.000	0.015	0.000	0.000
15.May.18	0.000	0.000	0.000	0.000	0.000	0.000	0.031	0.000	0.000
16.May.18	0.138	0.016	0.032	0.000	0.000	0.022	0.166	0.046	0.000
17.May.18	0.000	0.003	0.000	0.000	0.000	0.000	0.011	0.009	0.000
18.May.18	0.000	0.000	0.000	0.000	0.000	0.000	0.041	0.005	0.000
19.May.18	0.000	0.000	0.000	0.000	0.000	0.000	0.012	0.003	0.000
20.May.18	0.011	0.028	0.000	0.000	0.000	0.005	0.000	0.000	0.000
21.May.18	0.007	0.000	0.039	0.000	0.000	0.000	0.030	0.002	0.000
22.May.18	0.000	0.038	0.000	0.000	0.000	0.000	0.182	0.000	0.000
23.May.18	0.000	0.000	0.000	0.000	0.000	0.000	0.061	0.001	0.000
24.May.18	0.000	0.000	0.000	0.000	0.000	0.001	0.055	0.000	0.000
25.May.18	0.000	0.000	0.014	0.000	0.000	0.009	0.085	0.010	0.000
26.May.18	0.420	0.065	0.005	0.062	0.000	0.000	0.081	0.005	0.000
27.May.18	0.000	0.455	0.001	0.000	0.000	0.010	0.085	0.001	0.000
28.May.18	0.000	0.000	0.000	0.000	0.000	0.023	0.015	0.002	0.000
29.May.18	0.027	0.000	0.004	0.000	0.000	0.013	0.044	0.007	0.000
30.May.18	0.000	0.000	0.000	0.000	0.000	0.010	0.056	0.000	0.000
31.May.18	0.001	0.009	0.015	0.000	0.000	0.000	0.037	0.000	0.000
TOTAL	0.704	0.659	0.302	0.075	0.000	0.129	1.615	0.171	0.000

ALL FIGURES IN MU_s

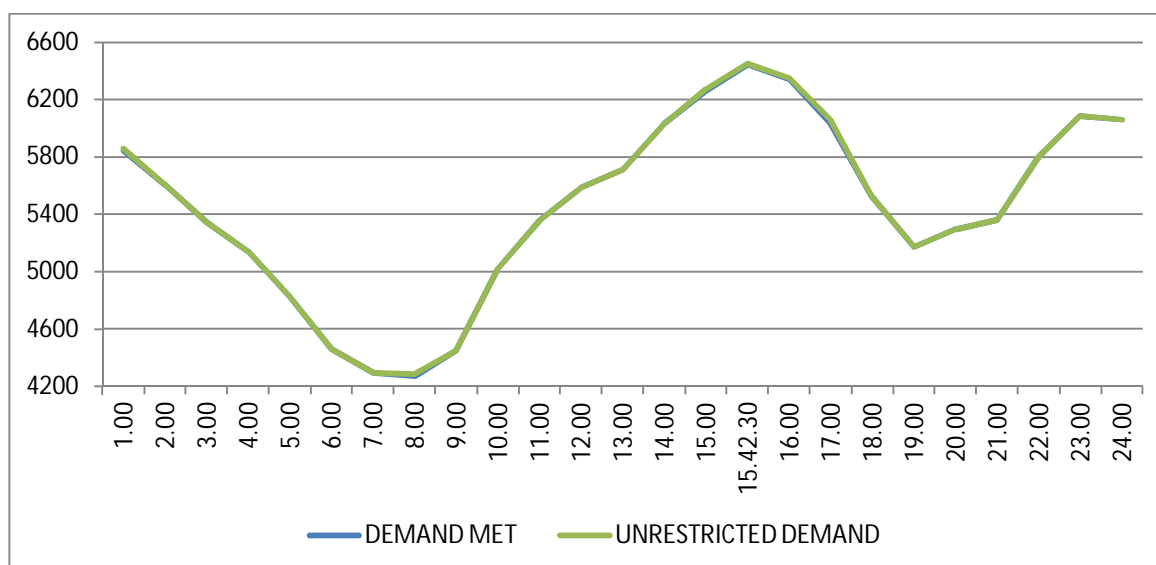
DATE	OTHER AGENCIES LIKE GENCO, BBMB, BTPS ETC.				THEFT PRONE SHEDDING			TOTAL SHEDDING DUE TO T&D CONSTS. & THEFT PRONE	GRAND TOTAL
	BSES		NDPL	NDMC	BSES		NDPL		
	BYPL	BRPL			BYPL	BRPL			
1	35	36	37	38	39	40	41	42= 26 to 41	43 = 25 + 42
01.May.18	0.000	0.000	0.000	0.000	0.000	0.000	0.000	0.002	0.002
02.May.18	0.000	0.000	0.000	0.000	0.000	0.000	0.000	0.061	0.061
03.May.18	0.000	0.000	0.000	0.000	0.000	0.000	0.000	0.040	0.040
04.May.18	0.000	0.000	0.000	0.000	0.000	0.000	0.000	0.010	0.010
05.May.18	0.000	0.000	0.000	0.000	0.000	0.000	0.000	0.017	0.017
06.May.18	0.000	0.000	0.000	0.000	0.000	0.000	0.000	0.004	0.004
07.May.18	0.000	0.000	0.000	0.000	0.000	0.000	0.000	0.159	0.159
08.May.18	0.000	0.000	0.000	0.000	0.000	0.000	0.000	0.223	0.223
09.May.18	0.000	0.000	0.000	0.000	0.000	0.000	0.000	0.097	0.097
10.May.18	0.000	0.000	0.000	0.000	0.000	0.000	0.000	0.009	0.009
11.May.18	0.000	0.000	0.000	0.000	0.000	0.000	0.000	0.046	0.046
12.May.18	0.000	0.000	0.000	0.000	0.000	0.000	0.000	0.046	0.046
13.May.18	0.000	0.000	0.000	0.000	0.000	0.000	0.000	0.344	0.344
14.May.18	0.000	0.000	0.000	0.000	0.000	0.000	0.000	0.031	0.031
15.May.18	0.000	0.000	0.000	0.000	0.000	0.000	0.000	0.031	0.114
16.May.18	0.000	0.000	0.000	0.000	0.000	0.000	0.000	0.420	0.420
17.May.18	0.000	0.000	0.000	0.000	0.000	0.000	0.000	0.023	0.023
18.May.18	0.000	0.000	0.000	0.000	0.000	0.000	0.000	0.046	0.046
19.May.18	0.000	0.000	0.000	0.000	0.000	0.000	0.000	0.015	0.015
20.May.18	0.000	0.000	0.000	0.000	0.000	0.000	0.000	0.044	0.044
21.May.18	0.000	0.000	0.000	0.000	0.000	0.000	0.000	0.078	0.078
22.May.18	0.000	0.000	0.000	0.000	0.000	0.000	0.000	0.220	0.220
23.May.18	0.000	0.000	0.000	0.000	0.000	0.000	0.000	0.062	0.062
24.May.18	0.000	0.000	0.000	0.000	0.000	0.000	0.000	0.056	0.056
25.May.18	0.000	0.000	0.000	0.000	0.000	0.000	0.000	0.118	0.118
26.May.18	0.000	0.000	0.000	0.000	0.000	0.000	0.000	0.638	0.638
27.May.18	0.000	0.000	0.003	0.000	0.000	0.000	0.000	0.555	0.555
28.May.18	0.000	0.000	0.000	0.000	0.000	0.000	0.000	0.040	0.040
29.May.18	0.000	0.000	0.000	0.000	0.000	0.000	0.000	0.095	0.095
30.May.18	0.000	0.000	0.000	0.000	0.000	0.000	0.000	0.066	0.066
31.May.18	0.000	0.000	0.000	0.000	0.000	0.000	0.000	0.062	0.062
TOTAL	0.000	0.000	0.003	0.000	0.000	0.000	0.000	3.658	3.741

DATE	(NET CONS.)	MAXI. DEMAND MET DURING THE DAY	TIME OF OCCUR- RENCE OF MAX DEMAND	SHEDDING AT THIS TIME	UN-REST- RICTED DEMAND	MAXIMUM UN-REST- RICTED DEMAND DURING THE DAY	TIME OF MAX. UN-REST. DEMAND	DEMAND AT THAT TIME	SHEDDING AT THAT TIME
	In Mus.	IN MW	IN HRS.	IN MW	IN MW	IN MW	HRS.	IN MW	IN MW
1	32	33	34	35	36=33+35	37=39+40	38	39	40
01.May.18	106.744	5093	00:00:21	0	5093	5093	00:00:21	5093	0
02.May.18	102.305	5225	15:40:51	0	5225	5225	15:40:51	5225	0
03.May.18	96.090	4607	15:29:25	0	4607	4607	15:29:25	4607	0
04.May.18	99.200	4863	15:34:13	0	4863	4863	15:34:13	4863	0
05.May.18	99.785	4929	23:31:33	0	4929	4929	23:31:33	4929	0
06.May.18	96.598	4906	00:01:36	0	4906	4906	00:01:36	4906	0
07.May.18	104.430	5182	22:36:59	0	5182	5182	22:36:59	5182	0
08.May.18	99.358	4784	15:26:15	0	4784	4784	15:26:15	4784	0
09.May.18	96.042	4799	14:47:20	0	4799	4799	14:47:20	4799	0
10.May.18	100.013	4899	23:01:12	0	4899	4899	23:01:12	4899	0
11.May.18	104.673	5298	23:32:19	4	5302	5302	23:32:19	5298	4
12.May.18	110.605	5410	23:12:03	6	5416	5416	23:12:03	5410	6
13.May.18	101.335	5344	00:00:12	0	5344	5344	00:00:12	5344	0
14.May.18	97.441	4946	23:07:40	0	4946	4946	23:07:40	4946	0
15.May.18	107.130	5382	23:18:31	0	5382	5382	23:18:31	5382	0
16.May.18	102.888	5350	23:28:51	0	5350	5350	23:28:51	5350	0
17.May.18	112.001	5387	23:25:42	0	5387	5387	23:25:42	5387	0
18.May.18	109.883	5551	23:00:31	0	5551	5551	23:00:31	5551	0
19.May.18	112.815	5451	00:03:56	0	5451	5451	00:03:56	5451	0
20.May.18	103.295	5341	23:35:17	0	5341	5341	23:35:17	5341	0
21.May.18	112.782	5609	23:22:17	0	5609	5609	23:22:17	5609	0
22.May.18	119.607	5849	22:59	7	5856	5856	22:59	5849	7
23.May.18	122.459	6078	23:12:19	0	6078	6078	23:12:19	6078	0
24.May.18	123.589	6029	15:05:12	0	6029	6029	15:05:12	6029	0
25.May.18	122.090	6008	15:42:02	0	6008	6008	15:42:02	6008	0
26.May.18	118.694	5851	00:00:51	0	5851	5851	00:00:51	5851	0
27.May.18	114.716	5959	23:42:54	7	5966	5966	23:42:54	5959	7
28.May.18	127.048	6209	23:21:18	0	6209	6209	23:21:18	6209	0
29.May.18	129.596	6285	22:54:11	8	6293	6293	22:54:11	6285	8
30.May.18	130.355	6442	15:42:30	10	6452	6452	15:42:30	6442	10
31.May.18	131.593	6417	15:33:23	0	6417	6417	15:33:23	6417	0
TOTAL	3415.160	6442 30.05.18	15:42:30	10	6452 30.05.18	6452	15:42:30	6442	10

10 **LOAD PATTERN OF DELHI ON THE DAY OF PEAK DEMAND MET DURING MAY 2018 ON 30.05.2018- 6442MW AT 15.42.30HRS.**

All figures in MW

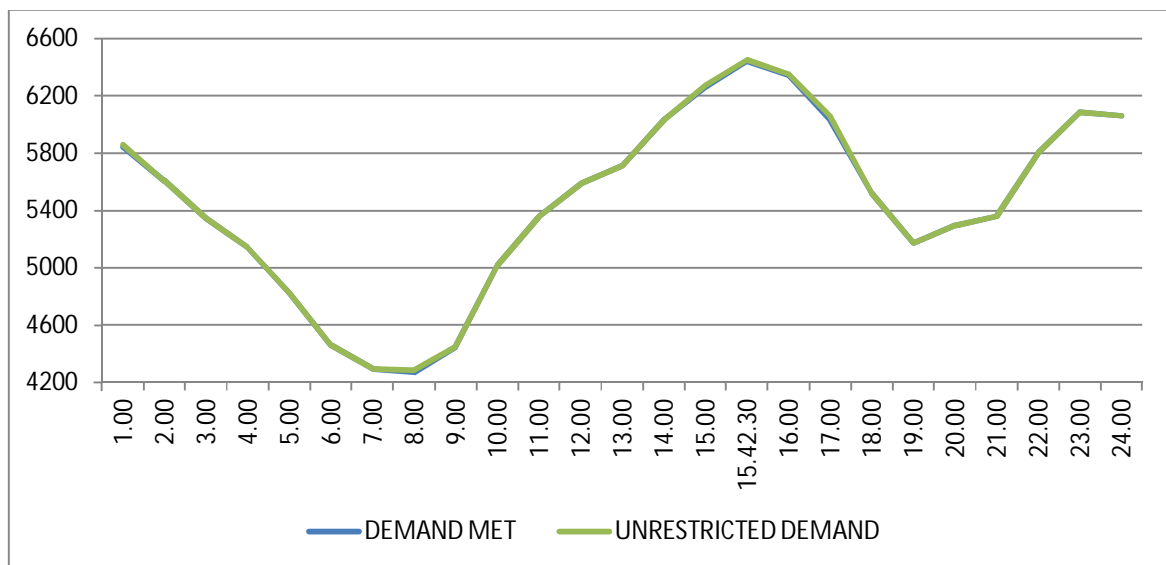
Hrs.	Demand	Load Shedding	Un-Restricted Demand
1.00	5843	13	5856
2.00	5606	0	5606
3.00	5341	0	5341
4.00	5141	0	5141
5.00	4827	0	4827
6.00	4459	0	4459
7.00	4295	0	4295
8.00	4270	15	4285
9.00	4449	0	4449
10.00	5018	0	5018
11.00	5356	0	5356
12.00	5587	0	5587
13.00	5711	0	5711
14.00	6030	0	6030
15.00	6261	10	6271
15.42.30	6442	10	6452
16.00	6342	10	6352
17.00	6035	24	6059
18.00	5521	0	5521
19.00	5172	0	5172
20.00	5295	0	5295
21.00	5360	0	5360
22.00	5800	0	5800
23.00	6088	0	6088
24.00	6062	0	6062
Total (IN MUS)	130.355	0.066	130.421



11 LOAD PATTERN OF DELHI ON THE DAY OF MAXIMUM UN-RESTRICTED DEMAND DURING MAY 2018 ON 30.05.2018-6452MW AT 15.42.30HRS.

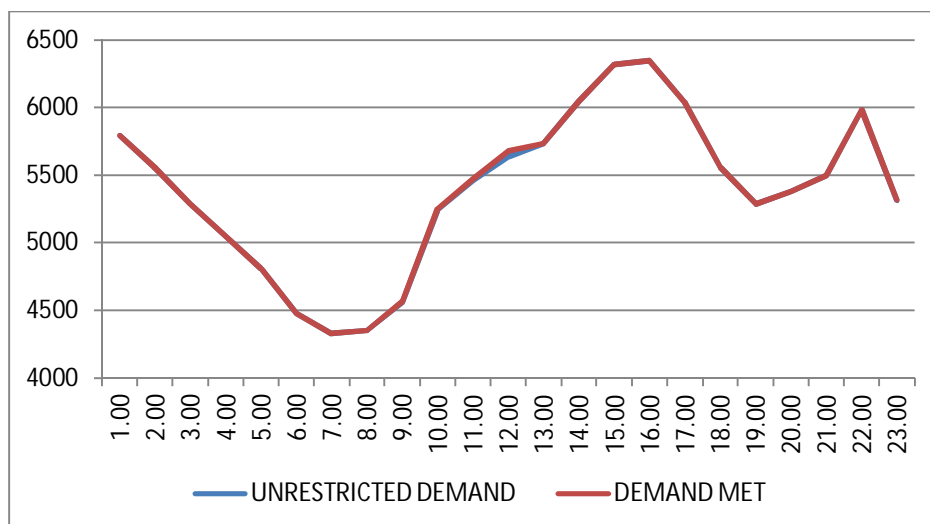
All figures in MW

Hrs.	Demand	Load Shedding	Un-Restricted Demand
1.00	5843	13	5856
2.00	5606	0	5606
3.00	5341	0	5341
4.00	5141	0	5141
5.00	4827	0	4827
6.00	4459	0	4459
7.00	4295	0	4295
8.00	4270	15	4285
9.00	4449	0	4449
10.00	5018	0	5018
11.00	5356	0	5356
12.00	5587	0	5587
13.00	5711	0	5711
14.00	6030	0	6030
15.00	6261	10	6271
15.42.30	6442	10	6452
16.00	6342	10	6352
17.00	6035	24	6059
18.00	5521	0	5521
19.00	5172	0	5172
20.00	5295	0	5295
21.00	5360	0	5360
22.00	5800	0	5800
23.00	6088	0	6088
24.00	6062	0	6062
Total (IN MUS)	130.355	0.066	130.421



**12 LOAD PATTERN OF DELHI ON THE DAY OF MAXIMUM ENERGY CONSUMED
DURING MAY 2018 – 31.05.2018 – 131.593Mus All figures in MW**

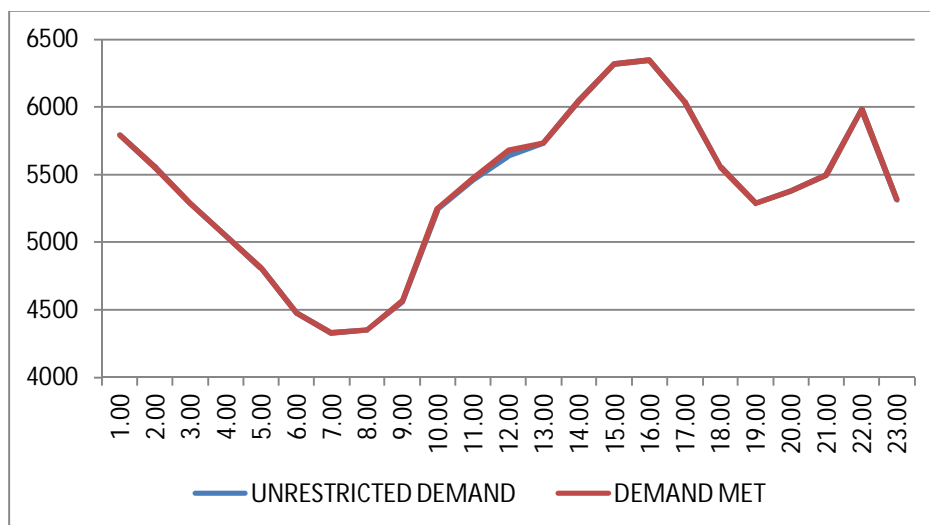
Hrs.	Demand	Load Shedding	Un-Restricted Demand
1.00	5790	0	5790
2.00	5555	0	5555
3.00	5288	0	5288
4.00	5046	0	5046
5.00	4808	0	4808
6.00	4476	0	4476
7.00	4330	0	4330
8.00	4351	0	4351
9.00	4561	8	4569
10.00	5239	9	5248
11.00	5460	11	5471
12.00	5637	42	5679
13.00	5733	2	5735
14.00	6046	0	6046
15.00	6320	0	6320
16.00	6346	0	6346
17.00	6039	0	6039
18.00	5559	0	5559
19.00	5286	0	5286
20.00	5378	0	5378
21.00	5500	0	5500
22.00	5983	0	5983
23.00	5315	4	5319
24.00	6285	0	6285
Total (IN MUS)	131.593	0.062	131.655



13 LOAD PATTERN OF DELHI ON THE DAY OF MAXIMUM UNRESTRICTED ENERGY DEMAND DURING MAY 2018 – 31.05.2018 – 131.655 Mus

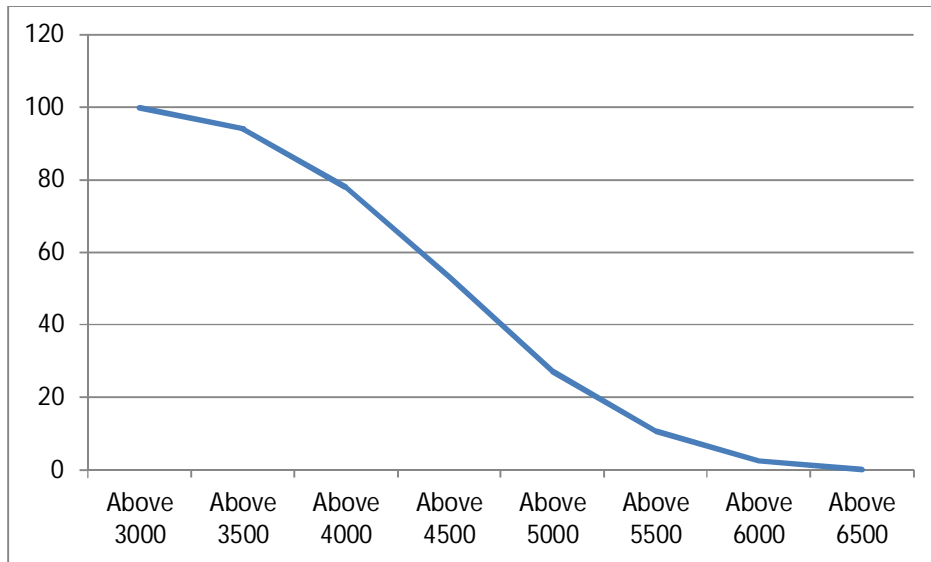
All figures in MW

Hrs.	Demand	Load Shedding	Un-Restricted Demand
1.00	5790	0	5790
2.00	5555	0	5555
3.00	5288	0	5288
4.00	5046	0	5046
5.00	4808	0	4808
6.00	4476	0	4476
7.00	4330	0	4330
8.00	4351	0	4351
9.00	4561	8	4569
10.00	5239	9	5248
11.00	5460	11	5471
12.00	5637	42	5679
13.00	5733	2	5735
14.00	6046	0	6046
15.00	6320	0	6320
16.00	6346	0	6346
17.00	6039	0	6039
18.00	5559	0	5559
19.00	5286	0	5286
20.00	5378	0	5378
21.00	5500	0	5500
22.00	5983	0	5983
23.00	5315	4	5319
24.00	6285	0	6285
Total (IN MUS)	131.593	0.062	131.655



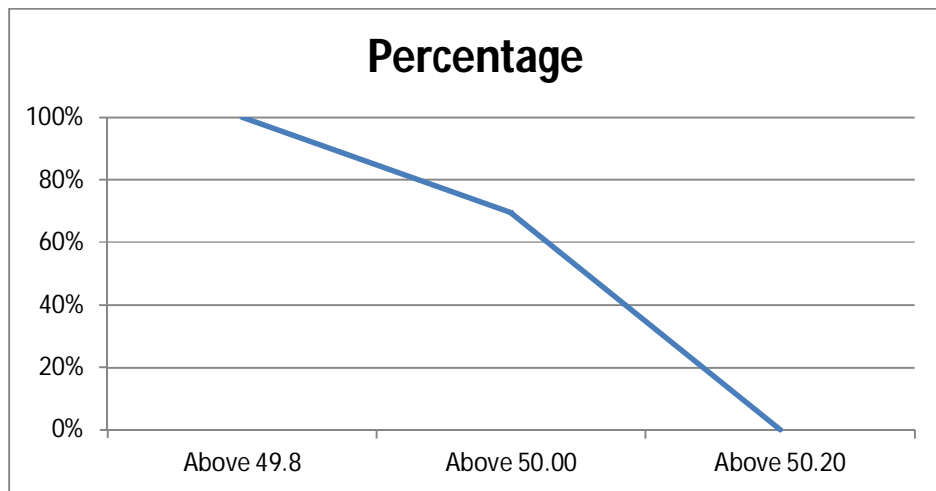
14 LOAD DURATION CURVE FOR MAY 2018

Load in MW	Percentage of Time
Above 3000	99.83%
Above 3500	94.09%
Above 4000	77.79%
Above 4500	53.23%
Above 5000	27.22%
Above 5500	10.65%
Above 6000	2.49%
Above 6500	0%



FREQUENCY ANALYSIS FOR THE MONTH OF MAY 2018

Frequency Range in Hz.	Percentage of time
Above 49.8	99.60
Above 50.0	56.85
Above 50.2	0.00



16 VOLTAGE PROFILE OF 220 KV SUB-STATIONS IN DELHI DURING MAY 2018

All figures in kV

Date	NARELA		GAZIPUR	
	Max	Min	Max	Min
01.May.18	229.82	217.31	235.11	223.37
02.May.18	230.46	217.95	235.88	223.37
03.May.18	231.49	218.86	238.33	225.43
04.May.18	230.59	217.82	237.56	222.98
05.May.18	227.88	217.31	233.82	219.63
06.May.18	231.88	220.27	235.11	223.11
07.May.18	233.95	220.15	235.36	220.79
08.May.18	235.23	221.82	237.17	224.4
09.May.18	234.98	223.50	237.94	224.27
10.May.18	234.98	219.63	237.69	224.4
11.May.18	231.75	220.40	234.72	222.21
12.May.18	229.95	219.89	233.95	222.85
13.May.18	237.69	221.69	240.14	224.4
14.May.18	232.14	220.40	237.69	221.82
15.May.18	232.01	220.79	234.59	221.56
16.May.18	233.04	213.44	238.97	217.05
17.May.18	229.82	216.28	231.24	216.02
18.May.18	231.11	218.47	231.11	218.98
19.May.18	231.24	220.15	233.3	219.11
20.May.18	231.49	220.40	233.95	222.21
21.May.18	232.66	219.63	232.4	220.4
22.May.18	232.01	217.70	231.24	217.31
23.May.18	230.46	218.47	230.08	216.66
24.May.18	228.92	217.95	228.92	215.24
25.May.18	229.82	217.82	230.08	215.76
26.May.18	228.92	1.03	230.08	213.83
27.May.18	228.92	218.60	229.17	217.57
28.May.18	229.82	218.86	229.17	217.18
29.May.18	228.14	217.18	229.95	0
30.May.18	230.72	217.95	231.75	214.34
31.May.18	229.30	217.70	228.79	210.47

17 VOLTAGE PROFILE OF 400 KV SUB-STATIONS IN DELHI DURING MAY 2018

All figures in kV

Date	400kV Bamnauli Grid Sub-Station				
	Max KV	Max Time	Min KV	Min Time	Average KV
01.May.18	413.63	06:02:32	391.59	23:14:34	402.55
02.May.18	412.7	18:02:09	393.7	00:05:24	404.46
03.May.18	416.68	04:02:08	392.3	23:20:50	404.49
04.May.18	412.46	05:21:48	391.59	22:50:16	400.72
05.May.18	408.94	07:56:06	386.2	22:59:48	399.12
06.May.18	414.34	05:16:29	394.41	23:09:42	405.09
07.May.18	416.21	23:46:46	392.06	12:20:44	401.55
08.May.18	415.74	04:35:47	395.58	19:42:49	404.29
09.May.18	415.74	04:03:40	394.88	14:36:02	404.07
10.May.18	416.92	06:02:15	393.94	23:14:18	402.88
11.May.18	409.88	06:49:49	388.54	19:44:19	397.9
12.May.18	408.48	05:03:53	388.54	19:23:15	397.03
13.May.18	418.09	18:03:19	391.36	00:05:37	404.81
14.May.18	411.99	00:01:00	388.78	14:42:52	403.1
15.May.18	415.04	06:01:14	389.95	15:46:16	400.9
16.May.18	419.03	03:26:18	382.21	15:30:23	396.38
17.May.18	408.71	06:02:45	382.68	15:23:37	395.07
18.May.18	408.94	06:03:59	385.73	16:35:40	395.41
19.May.18	409.65	06:01:49	387.37	12:45:03	397.76
20.May.18	411.06	06:03:26	390.19	14:24:59	397.84
21.May.18	409.88	06:00:21	385.5	10:54:10	394.84
22.May.18	409.65	06:46:23	384.56	15:11:54	393.98
23.May.18	406.37	07:07:07	385.73	22:16:20	394.26
24.May.18	401.68	06:01:10	384.32	12:45:12	392.34
25.May.18	403.32	06:02:06	382.68	14:38:06	392.64
26.May.18	404.49	05:01:48	28.84	12:20:09	338.35
27.May.18	408.71	06:01:32	390.19	14:48:43	399.07
28.May.18	409.65	06:03:15	388.08	14:45:16	398.17
29.May.18	410.12	06:01:09	387.37	15:31:40	397.88
30.May.18	413.87	06:00:24	389.72	14:48:25	400.36
31.May.18	411.29	06:01:16	389.01	14:47:48	398.7

All figures in kV

Date	400kV Bawana Grid Sub-Station				
	Max KV	Max Time	Min KV	Min Time	Average KV
01.May.18	417.15	06:02:42	397.92	23:17:29	408.74
02.May.18	421.37	18:01:11	398.63	00:09:27	410.34
03.May.18	422.55	04:03:54	400.74	23:31:34	412.41
04.May.18	419.73	05:22:56	399.57	22:11:49	408.36
05.May.18	413.87	06:02:20	395.81	23:11:37	406.19
06.May.18	422.08	13:27:44	401.44	00:00:00	411.26
07.May.18	421.84	23:49:37	399.8	12:19:30	407.63
08.May.18	422.08	01:28:32	403.08	19:14:02	412.04
09.May.18	421.37	04:00:08	404.02	19:10:59	411.66
10.May.18	421.61	06:03:15	401.68	19:42:15	409.37
11.May.18	415.51	06:50:40	396.28	19:26:16	404.78
12.May.18	412.23	05:06:14	396.05	19:23:16	403.79
13.May.18	427.23	18:03:20	399.57	00:06:15	411.3
14.May.18	418.09	00:17:38	398.16	14:23:35	410.19
15.May.18	418.09	06:00:48	397.92	15:45:06	406.06
16.May.18	421.84	03:05:55	393.47	15:20:23	405.57
17.May.18	416.92	05:03:51	396.75	15:26:10	403.85
18.May.18	414.57	07:02:16	395.81	16:36:19	402.49
19.May.18	414.57	06:02:03	396.28	12:44:59	405.2
20.May.18	415.74	06:02:38	399.1	19:57:11	405.92
21.May.18	414.81	06:01:46	396.05	10:36:19	402.91
22.May.18	413.17	06:46:05	393.94	22:47:38	400.89
23.May.18	411.06	07:03:16	394.88	22:16:18	400.91
24.May.18	407.77	06:00:35	392.76	12:30:22	399.58
25.May.18	408.94	06:01:55	391.36	14:38:12	399.8
26.May.18	409.88	05:01:34	390.19	15:25:13	400.09
27.May.18	410.35	06:02:15	395.58	00:14:11	402.71
28.May.18	411.06	06:06:25	393.7	14:45:07	401.99
29.May.18	409.88	07:04:08	392.3	15:38:56	400.78
30.May.18	413.87	05:59:46	395.11	14:47:14	402.83
31.May.18	410.82	06:33:29	393.47	14:49:32	400.84

**18 DETAILS OF LUMPED CAPACITORS AT NEAREST 220 KV SUBSTATION
(AS ON 31.03.2018)**

S. No.	SUB-STATION	Name of Utility	INSTALLED CAPACITY			
			66KV	33kV	11kV	TOTAL
1	IP YARD	DTL		30.00		30.00
1	Kamla Market	BYPL			16.35	16.35
2	Minto Road	BYPL				0.00
3	GB Pant Hosp	BYPL			10.48	10.48
4	Delhi Gate	BYPL			16.30	16.30
5	Tilakmarg	NDMC			5.04	5.04
7	Cannaught Place	NDMC			10.08	10.08
8	Kilokri	BRPL		0.00	10.48	10.48
9	NDSE-II	BRPL				0.00
11	Nizamuddin	BRPL				0.00
12	Exhibition-I	BRPL				0.00
13	Exhibition-II	BRPL				0.00
14	Defence Colony	BRPL				0.00
15	IG Stadium	BYPL		10.08	5.45	15.53
16	Lajpat Nagar	BRPL				0.00
17	IP Estate	BYPL			10.90	10.90
18	D.D.U.Marg	BYPL			10.80	10.80
			0.00	40.08	95.88	135.96
2	Electric Lane					
1	Electric Lane	NDMC			5.04	5.04
2	Scindia House	NDMC			10.44	10.44
3	Mandi House	NDMC			10.80	10.80
4	Raisina Road	NDMC			10.08	10.08
5	Raja Bazar	NDMC			10.08	10.08
			0.00	0.00	46.44	46.44
3	RPH Station	IPGCL		20.00		20.00
1	Lahori Gate	BYPL			10.49	10.49
2	Jama Masjid	BYPL			10.48	10.48
4	Kamla Market	BYPL				0.00
5	Minto Road	BYPL			10.90	10.90
6	GB Pant Hosp	BYPL				0.00
7	IG Stadium	BYPL				0.00
			0.00	20.00	31.87	51.87
4	Parkstreet S/stn	DTL	20.00	20.00		40.00
1	Shastri Park	BYPL		0.00	5.45	5.45
2	Faiz Road	BYPL			18.05	18.05
3	Motia Khan	BYPL			16.30	16.30
4	Prasad Nagar	BYPL			16.25	16.25

S. No.	SUB-STATION	Name of Utility	INSTALLED CAPACITY			
			66KV	33kV	11kV	TOTAL
5	Anand Parbat	BYPL			10.80	10.80
6	Shankar Road	BYPL			10.44	10.44
7	Rama Road	TPDDL			0.00	0.00
8	Baird Road	NDMC			10.08	10.08
9	Hanuman Road	NDMC			10.08	10.08
10	Pusa	TPDDL			5.44	5.44
11	Ridge Valley	BRPL			0.00	0.00
12	B. D. Marg	NDMC			5.40	5.40
13	Nirman Bhawan	NDMC			5.04	5.04
			20.00	20.00	113.33	153.33
5	Naraina S/stn	DTL		20.00	5.04	25.04
1	DMS	BYPL			10.85	10.85
2	Mayapuri	BRPL		10.87	10.40	21.27
3	Inderpuri	TPDDL		13.26	5.04	18.30
4	Rewari line	TPDDL				0.00
5	Khyber Lane	MES		10.05		10.05
6	Kirbi Place	MES		10.05		10.05
7	Payal	TPDDL			10.08	10.08
8	A-21 Naraina	TPDDL			4.80	4.80
8	Saraswati Garden	TPDDL			10.08	10.08
			0.00	64.23	56.29	120.52
6	Mehrauli S/stn	DTL	80.00		5.04	85.04
1	Adchini	BRPL			14.61	14.61
2	Andheria Bagh	BRPL			10.85	10.85
3	IIT	BRPL			10.90	10.90
4	JNU	BRPL			10.03	10.03
5	Bijwasan	BRPL			15.47	15.47
6	DC Saket	BRPL		10.08	9.98	20.06
7	Malviya Nagar	BRPL				0.00
8	C Dot	BRPL			23.08	23.08
9	Vasant kunj B-Blk	BRPL	21.79		10.90	32.69
10	Vasant kunj C-Blk	BRPL	20.16		10.48	30.64
11	Palam	BRPL				0.00
12	IGNOU	BRPL			14.54	14.54
13	R. K. Puram-I	BRPL			10.07	10.07
14	Vasant Vihar	BRPL			19.25	19.25
15	Pusp Vihar	BRPL			10.44	10.44
16	Bhikaji Cama Place	BRPL		10.08	10.07	20.15
17	Fatehpuri	BRPL			14.40	14.40
			121.95	20.16	200.11	342.22

S. No.	SUB-STATION	Name of Utility	INSTALLED CAPACITY			
			66KV	33kV	11kV	TOTAL
7	Vasantkunj S/stn	DTL	40.00		5.04	45.04
1	R. K. Puram-II	BRPL			10.80	10.80
2	Vasant kunj C-Blk	BRPL				0.00
3	Vasant kunj D-Blk	BRPL			9.63	9.63
4	Ridge Valley	BRPL				0.00
			40.00	0.00	25.47	65.47
8	Okhla S/stn	DTL	60.00	10.00	5.04	75.04
1	Balaji	BRPL			10.80	10.80
2	East of Kailash	BRPL			15.89	15.89
3	Alaknanda	BRPL			16.30	16.30
4	Malviya Nagar	BRPL	21.79	20.16	10.85	52.80
5	Masjid Moth	BRPL			16.30	16.30
6	Nehru Place	BRPL			21.34	21.34
7	Okhla Ph-I	BRPL	21.79		16.30	38.09
8	Okhla Ph-II	BRPL		20.93	15.47	36.40
9	Shivalik	BRPL			10.80	10.80
10	Batra	BRPL			15.90	15.90
11	VSNL	BRPL			10.90	10.90
12	Siri Fort	BRPL			10.49	10.49
13	Tuglakabad	BRPL			18.05	18.05
			103.58	51.09	194.43	349.10
9	Lodhi Road S/stn	DTL			20.00	20.00
1	Defence Colony	BRPL			14.85	14.85
2	Hudco	BRPL			10.90	10.90
3	Lajpat Nagar	BRPL			10.90	10.90
4	Nizamuddin	BRPL			10.44	10.44
5	Vidyut Bhawan (Shahjahan Rd)	NDMC			10.80	10.80
6	Ex. Gr. II	BRPL			0.00	0.00
7	IHC	BRPL			0.00	0.00
			0.00	0.00	77.89	77.89
10	Sarita Vihar S/stn	DTL	20.00		5.04	25.04
1	Sarita Vihar	BRPL			10.07	10.07
2	MCIE	BRPL			17.26	17.26
3	Mathura Road	BRPL			11.69	11.69
4	Jamia Millia	BRPL			10.89	10.89
5	Sarai Julena	BRPL			16.29	16.29
6	Jasola	BRPL			5.44	5.44
7	Meethapur	BRPL			14.40	14.40
			20.00	0.00	91.08	111.08

S. No.	SUB-STATION	Name of Utility	INSTALLED CAPACITY			
			66KV	33kV	11kV	TOTAL
11	Wazirabad					
1	Bhagirathi	BYPL		14.40	18.10	32.50
2	Ghonda	BYPL	0.00	22.56	15.94	38.50
3	Seelam Pur	BYPL		10.08	21.39	31.47
4	Dwarkapuri	BYPL			22.66	22.66
5	Nandnagri	BYPL	20.01		16.35	36.36
6	Yamuna Vihar	BYPL			14.40	14.40
7	East of Loni Road	BYPL			18.00	18.00
8	Shastri Park	BYPL			10.90	10.90
9	Karawal Nagar	BYPL			5.40	5.40
10	Sonia Vihar	BYPL			14.70	14.70
			20.01	47.04	157.84	224.89
12	Geeta Colony					
1	Geeta Colony	BYPL			10.49	10.49
2	Kanti Nagar	BYPL			18.10	18.10
3	Kailash Nagar	BYPL			15.48	15.48
4	Seelam Pur	BYPL				0.00
5	Shakar Pur	BYPL			10.80	10.80
6	Krishna Nagar	BYPL			14.40	14.40
			0.00	0.00	69.27	69.27
13	Gazipur S/stn	DTL	40.00		5.04	45.04
1	Dallupura	BYPL	0.00		18.10	18.10
2	Vivek Vihar	BYPL			9.57	9.57
3	GT Road	BYPL			10.85	10.85
4	Kondli	BYPL	20.00		5.04	25.04
5	MVR-I	BYPL			10.90	10.90
6	MVR-II	BYPL	20.00		10.44	30.44
7	PPG Ind. Area	BYPL			10.06	10.06
8	New Kondli	BYPL			10.80	10.80
			80.00	0.00	90.80	170.80
14	Patparganj S/stn	DTL	40.00	20.00	5.04	65.04
1	GH-I	BYPL	19.89		15.85	35.74
2	GH-II	BYPL	20.09		18.10	38.19
3	CBD	BYPL		10.03	15.48	25.51
4	Guru Angad Nagar	BYPL			15.49	15.49
5	Karkadooma	BYPL		10.80	10.44	21.24
6	Preet Vihar	BYPL			10.08	10.08
7	CBD-II	BYPL			10.80	10.80
8	Shakarpur	BYPL				0.00

S. No.	SUB-STATION	Name of Utility	INSTALLED CAPACITY			
			66KV	33kV	11kV	TOTAL
9	Jhilmil	BYPL			10.80	10.80
10	Dilshad Garden	BYPL	20.16		15.48	35.64
11	Khichripur	BYPL	21.79		15.89	37.68
12	Mother Dairy	BYPL				0.00
13	Scope Building	BYPL				0.00
14	Vivek Vihar	BYPL			7.20	7.20
15	Akhardham	BYPL			14.60	14.60
			121.93	40.83	165.25	328.01
15	Najafgarh S/stn	DTL	60.00		5.04	65.04
1	A4 Paschim Vihar	BRPL			10.80	10.80
2	Nangloi	BRPL	21.73		15.84	37.57
3	Nangloi W/W	BRPL	20.89		10.85	31.74
4	Pankha Road	BRPL			15.88	15.88
5	Jaffarpur	BRPL			26.23	26.23
7	Inst. Area Janakpuri (Sagarpur)	BRPL			17.60	17.60
8	Paschimpuri	BRPL		10.05	15.47	25.52
9	Paschim Vihar	BRPL	41.83		15.43	57.26
10	Mukherjee Park	BRPL			20.83	20.83
11	Udyog Nagar	BRPL			10.43	10.43
12	Choukhandi	BRPL			10.07	10.07
13	DJB Najafgarh	BRPL			21.60	21.60
			144.45	10.05	196.07	350.57
16	Pappankalan-I S/stn	DTL	20.00		5.04	25.04
1	Bindapur Grid G-3 PPK	BRPL	21.73		15.85	37.58
2	Bodella-I	BRPL	20.10		21.70	41.80
3	Bodella-II	BRPL	21.73		17.64	39.37
4	DC Janakpuri	BRPL			10.03	10.03
5	G-2 PPK (Nasirpur)	BRPL			16.20	16.20
6	G-5 PPK (Matiala)	BRPL			22.71	22.71
7	G-6 PPK	BRPL			12.60	12.60
8	G-7 PPK	BRPL			21.60	21.60
9	G-15 PPK	BRPL			10.80	10.80
10	Harinagar	BRPL			16.25	16.25
11	Rewari line	TPDDL			5.44	5.44
			83.56	0.00	175.86	259.42

S. No.	SUB-STATION	Name of Utility	INSTALLED CAPACITY			
			66KV	33kV	11kV	TOTAL
17	BBMB Rohtak Road					
1	S.B. Mill	BRPL			10.07	10.07
2	Rama Road	TPDDL			10.88	10.88
3	Ram Pura	TPDDL			10.48	10.48
4	Rohtak Road	TPDDL			10.08	10.08
5	Vishal	BRPL			10.40	10.40
6	Madipur	BRPL			10.43	10.43
7	Sudershan Park	TPDDL			10.08	10.08
8	Kirti Nagar	TPDDL			7.20	7.20
			0.00	0.00	79.62	79.62
18	Shalimarbagh S/stn	DTL		40.00	6.00	46.00
1	S.G.T. Nagar	TPDDL			7.20	7.20
2	Ashok Vihar	TPDDL			0.00	0.00
3	Haiderpur	TPDDL			11.39	11.39
4	SMB FC	TPDDL			12.64	12.64
5	Rani Bagh	TPDDL			14.40	14.40
6	SMB KHOSLA	TPDDL			7.20	7.20
			0.00	40.00	58.83	98.83
19	Subzimandi S/stn	DTL			6.00	6.00
1	Shakti Nagar	TPDDL			5.04	5.04
2	Gulabibagh	TPDDL			10.88	10.88
3	Shahzadabagh	TPDDL			15.79	15.79
4	DU	TPDDL			7.20	7.20
5	Tripolia	TPDDL			10.88	10.88
6	B. G. Road	BYPL			5.40	5.40
			0.00	0.00	61.19	61.19
20	Narela S/stn	DTL	40.00		5.04	45.04
1	A-7 Narela	TPDDL			10.88	10.88
2	Azad Pur	TPDDL			22.80	22.80
3	Badli	TPDDL	20.00		5.95	25.95
4	DSIDC Narela-1	TPDDL			5.95	5.95
5	GTK	TPDDL			8.44	8.44
6	Jahangirpuri	TPDDL	20.00	10.00	0.00	30.00
7	Bhalswa	TPDDL			12.64	12.64
8	Pitampura-I	TPDDL	20.00		12.24	32.24
9	RG-1	TPDDL			7.20	7.20
			100.00	10.00	91.14	201.14

S. No.	SUB-STATION	Name of Utility	INSTALLED CAPACITY			
			66KV	33kV	11kV	TOTAL
21	Gopalpur S/stn	DTL		30.00	5.04	35.04
1	Hudson Lane	TPDDL			5.95	5.95
2	Wazirabad	TPDDL			7.20	7.20
3	Indra Vihar	TPDDL			5.04	5.04
4	DIFR	TPDDL				0.00
5	GTK Road	TPDDL			8.44	8.44
6	Jahangirpuri	TPDDL	20.00	20.00	7.20	47.20
7	Civil lines	TPDDL			7.20	7.20
8	Pitam Pura-3	TPDDL			7.20	7.20
9	SGT Nagar	TPDDL			13.15	13.15
10	Tiggipur	TPDDL			10.88	10.88
11	Model Town	TPDDL			14.40	14.40
12	Azad Pur	TPDDL			22.80	22.80
13	Dheerpur	TPDDL			14.40	14.40
			20.00	50.00	128.90	198.90
22	Rohini S/stn	DTL	40.00		6.00	46.00
1	Rohini Sec-22	TPDDL			18.08	18.08
2	Rohini Sec-24	TPDDL			7.20	7.20
3	Rohini-3	TPDDL			5.95	5.95
4	Rohini-4	TPDDL			11.39	11.39
5	Rohini-5	TPDDL			11.39	11.39
6	Rohini-6	TPDDL			0.00	0.00
7	Mangolpuri-2	TPDDL	20.00		7.20	27.20
8	Pitam Pura-1	TPDDL			0.00	0.00
9	Pitam Pura-2	TPDDL			10.48	10.48
10	Rohini DC-1	TPDDL			14.40	14.40
11	AIR Kham pur	TPDDL			11.90	11.90
			60.00	0.00	103.99	163.99
23	Kanjhawala S/stn	DTL	20.00		5.04	25.04
1	Bawana Clear Water	TPDDL			14.30	14.30
2	Pooth Khoord	TPDDL	20.00		7.20	27.20
4	Rohini -2	TPDDL			13.15	13.15
			40.00	0.00	39.69	79.69
24	BAWANA S/stn					
1	Bawana S/stn No. 6	TPDDL			10.88	10.88
2	Bawana S/stn No. 7	TPDDL			7.20	7.20
			0.00	0.00	18.08	18.08

S. No.	SUB-STATION	Name of Utility	INSTALLED CAPACITY			
			66KV	33kV	11kV	TOTAL
25	Kashmeregate S/stn	DTL			5.04	5.04
1	Civil lines	TPDDL			7.20	7.20
2	Town Hall	BYPL			8.64	8.64
3	Fountain	BYPL			5.45	5.45
			0.00	0.00	26.33	26.33
26	Pappankalan-II					
1	DMRC	BRPL				0.00
2	HASTAL	BRPL			21.60	21.60
3	GGSH	BRPL			10.80	10.80
4	66kV G-4	BRPL			21.60	21.60
			0.00	0.00	54.00	54.00
27	Trauma Center (AIIMS)					
1	AIIMS	NDMC		13.26	5.04	18.30
2	Trauma Center	NDMC			10.08	10.08
3	Netaji Nagar	NDMC			15.12	15.12
4	Sanjay Camp	NDMC			10.08	10.08
5	Kidwai Nagar	NDMC			10.08	10.08
6	SJ Airport	NDMC			5.04	5.04
7	Race Course	NDMC			10.44	10.44
			0.00	13.26	65.88	79.14
28	MUNDKA					
1	Mangolpuri-I	TPDDL			19.10	19.10
2	Rohini Sec-23	TPDDL	20.00		14.20	34.20
3	66kV Mundka	BRPL			21.60	21.60
			20.00	0.00	54.90	74.90
29	DSIDC BAWANA					
1	DSIDC NRL-1	TPDDL	0.00			0.00
2	DSIDC NRL-2	TPDDL			21.60	21.60
3	Bawana Clear Water	TPDDL			21.60	21.60
4	Bawana-1	TPDDL			14.40	14.40
			0.00	0.00	57.60	57.60
30	RIDGE VALLEY					
1	Keventry Diary	NDMC			10.08	10.08
2	Nehru Park	NDMC			5.04	5.04
3	State Guest House	NDMC			5.40	5.40
4	Bapu Dham	NDMC			15.48	15.48
5	66kV Vasant Kunj Inst. Area	BRPL			21.60	21.60
			0.00	0.00	57.60	57.60

S. No.	SUB-STATION	Name of Utility	INSTALLED CAPACITY			
			66KV	33kV	11kV	TOTAL
31	IP EXTN (PRAGATI)					
1	Vidyut Bhawan	NDMC			10.08	10.08
2	Dalhousie Road	NDMC			5.04	5.04
3	National Archives	NDMC			10.08	10.08
4	School Lane	NDMC			10.44	10.44
			0.00	0.00	35.64	35.64
32	Wazirpur					
1	Tri Nagar	TPDDL			14.80	14.80
2	Wazirpur-1	TPDDL			18.80	18.80
3	Wazirpur-2	TPDDL			13.20	13.20
4	Ashok vihar	TPDDL			20.47	20.47
5	Azad Pur	TPDDL			22.80	22.80
6	GTK	TPDDL			8.44	8.44
			0.00	0.00	98.51	98.51
33	Peeragarhi					
1	Rani Bagh	TPDDL			0.00	0.00
2	Rani Bagh cc	TPDDL			9.60	9.60
			0.00	0.00	9.60	9.60
34	Rohini-II					
1	Rohini-6	TPDDL			13.15	13.15
2	Siraspur	TPDDL			14.80	14.80
			0.00	0.00	27.95	27.95

ALL FIGURES IN MVAR

Utility	HT	LT	Total
BYPL	903.49	102.00	1005.49
BRPL	1257.93	242.00	1499.93
TPDDL*	969.12	119.00	1088.12
NDMC	259.86	24.00	283.86
DTL	753.52	0.00	753.52
IPGCL (RPH)	20.00	0.00	20.00
MES	20.10	0.00	20.10
TOTAL	4184.02	487.00	4671.02

20 DETAILS OF BREAK-DOWNS DURING THE MONTH OF MAY 2018

SL NO	OCCURRENCE OF BREAK-DOWN		DETAILS OF THE BREAKDOWN	TIME OF RESTORATION		REMARKS
	DATE	TIME		DATE	TIME	
1	2.5.18	12:45	VASANT KUNJ 220/66kV 100MVA Tx-II	2.5.18	19:05	86, I/C TRIPPED ON BUCHHOLZ.
2	2.5.18	17:21	400kV Ballabgarh-Bamnauli Ckt-II	2.5.18	19:45	AT BAMNAULI : DIST PROT, ZONE-I, RYB PHASE, 186A&B.
3	3.5.18	02:50	SHALIMAR BAGH 220/33kV 100MVA Tx-III	3.5.18	03:25	AT SHALIMARBAGH: 33 kV I/C-III TRIPPED ON O/C, E/F.
4	3.5.18	02:50	SHALIMAR BAGH 33kV HAIDERPUR CKT-II	3.5.18	18:24	AT SHALIMARBAGH : E/F, 86. FLASH OCCURRED ON R PHASE CT.
5	3.5.18	03:54	INDRAPRASTHA POWER 220/33kV 100MVA Tx-III	3.5.18	17:58	86, 186, BUCHHOLZ.
6	3.5.18	07:15	220kV MAHARANI BAGH - PRAGATI CKT	3.5.18	08:03	AT PRAGATI : DIST PROT, ZONE-II, DIST 3.634KM, 86, 186.
7	3.5.18	07:15	220kV PRAGATI - SARITA VIHAR CKT - I	3.5.18	08:03	At Sarita Vihar : 186A&B. At Pragati : Ckt. did not trip.
8	3.5.18	19:00	220kV KANJHAWALA-NAJAFGARH CKT	4.5.18	00:55	R PHASE JUMPER SNAPPED.
9	5.5.18	10:18	RAJGHAT 33kV JAMA MASJID CKT-1 (BAY-5)	5.5.18	10:48	BUS BAR PROTECTION OPERATED. MONKEY JUMP ON BUS.
10	5.5.18	10:18	RAJGHAT 33kV MOTIA KHAN CKT (BAY-1)	5.5.18	10:48	BUS BAR PROTECTION OPERATED. MONKEY JUMP ON BUS.
11	5.5.18	10:18	RAJGHAT 33kV JAMA MASJID CKT-2 (BAY-6)	5.5.18	10:48	BUS BAR PROTECTION OPERATED. MONKEY JUMP ON BUS.
12	5.5.18	19:35	PATPARGANJ 33/11kV, 20MVA Tx	6.5.18	00:48	86, 87AX, SMOKE OBSERVED IN PANEL.
13	7.5.18	14:03	220kV NARELA - MANDOLA CKT-I	7.5.18	14:27	At Mandola: ckt tripped. AT Narela : Ckt. did not tripped.
14	7.5.18	23:09	220kV GOPALPUR- MANDOLACKT-II	7.5.18	13:16	86, 1.96MM, F/C 300.1 A
15	7.5.18	23:09	220kV GOPALPUR- MANDOLACKT-II	8.5.18	13:16	AT GOPALPUR : DIST PROT, ZONE-I, 86. AT MANDOLA DIST PROT, ZONE-I, II, III, DIST 17.17KM.
16	7.5.18	23:09	220kV GOPALPUR- MANDOLACKT-I	8.5.18	13:16	AT GOAPLPUR : 86. AT MANDOLA : DIST PROT, DIST 19.15KM.
17	7.5.18	23:09	220kV GOPALPUR- MANDOLACKT-I	7.5.18	13:16	AT MANDOLA: DIST. PROTECTION, 19.15 KM, 10KA TRIPPED ON 86 A & B.
18	7.5.18	23:09	220kV GOPALPUR- MANDOLACKT-II	9.5.18	13:16	AT GOPALPUR : 86,zone-1, Y phase
19	7.5.18	23:09	220kV GOPALPUR- MANDOLACKT-I	9.5.18	13:16	AT Gopalpur : 86, Dist. Protection
20	7.5.18	23:37	PATPARGANJ 66kV GH-I CKT-I	7.5.18	23:55	AT PATPARGANJ : DISTANCE PROTECTION, ZONE-I, RYB PHASE, 6 KM
21	8.5.18	00:35	OKHLA 66kV MALVIYA NAGAR CKT-I	8.5.18	03:09	E/F
22	8.5.18	00:52	220 KV GOPALPUR-WAZIRABAD CKT - 1	8.5.18	01:15	AT GOPALPUR : DIST PROT, 86.
23	8.5.18	00:54	220kV GOPALPUR-SUBZI MANDI CKT-II	8.5.18	01:17	AT SABZIMANDI: DISTANCE PROTECTION, ZONE-I
24	8.5.18	00:54	220kV GOPALPUR-SUBZI MANDI CKT-I	8.5.18	01:17	AT SUBZI MANDI : DIST PROT, ZONE-I.
25	8.5.18	00:54	220kV GOPALPUR-SUBZI MANDI CKT-II	8.5.18	01:17	AT SUBZI MANDI : DIST PROT, ZONE-I.
26	8.5.18	00:54	220kV GOPALPUR-SUBZI MANDI CKT-I	8.5.18	01:17	AT SABZIMANDI: DIST. PROT, ZONE-I
27	8.5.18	00:54	SUBZI MANDI 220/33kV 100MVA Tx-I	8.5.18	01:17	AT SABZI MANDI: 86 & 186
28	8.5.18	00:54	SUBZI MANDI 220/33kV 100MVA Tx-II	8.5.18	01:17	AT SABZIMANDI: 86 & 186
29	8.5.18	00:54	SUBZI MANDI 220/33kV 100MVA Tx-I	8.5.18	01:17	AT SABZIMANDI: 86 & 186
30	8.5.18	00:54	SUBZI MANDI 220/33kV 100MVA Tx-II	8.5.18	01:17	AT SABZIMANDI: 86 & 186
31	8.5.18	01:27	220kV GOPALPUR- MANDOLACKT-II	8.5.18	05:41	AT GOPALPUR : DIST PROT, DIST 17.77KM.
32	8.5.18	01:27	220 KV GOPALPUR-WAZIRABAD CKT - 1	8.5.18	01:42	AT WAZIRABAD : DIST PROT, ZONE-I, DIST 1.054KM, 86ABC.
33	8.5.18	01:27	220 KV GOPALPUR-WAZIRABAD CKT - 1	8.5.18	02:28	AT WAZIRABAD: DISTANCE PROTECTION, ZONE-I, 86ABC,

SL NO	OCCURRENCE OF BREAK-DOWN		DETAILS OF THE BREAKDOWN	TIME OF RESTORATION		REMARKS
	DATE	TIME		DATE	TIME	
34	8.5.18	01:27	220 KV GOPALPUR-WAZIRABAD CKT - 1	8.5.18	01:42	AT WAZIRABAD : DIST PROT, ZONE-I, DIST 1.054KM, 86ABC.
35	8.5.18	01:27	220 KV GOPALPUR-WAZIRABAD CKT-2	8.5.18	03:49	AT WAZIRABAD: DIST PROT, ZONE-I, 14.7KM
36	8.5.18	01:45	SUBZI MANDI 220/33kV 100MVA Tx-II	8.5.18	04:38	E/F, Fault 186,86
37	8.5.18	12:01	RAJGHAT 220/33kV 100MVA Tx-I	9.5.18	00:27	AT RAJGHAT: TRIPPED ON BUS BAR PROT. ALONG WITH BAY-I
38	8.5.18	20:47	220KV GOPALPUR- MANDOLACKT-II	9.5.18	20:49	D/P, zone-1, 12.17km, Y phase,Ryb
39	9.5.18	06:25	NARAINA 220/33kV 100MVA Tx-II	9.5.18	18:18	O/C, E/F. 86
40	9.5.18	06:25	NARAINA 33/11kV, 16MVA Tx-I	10.5.18	18:35	86,E/F.
41	9.5.18	06:25	NARAINA 220/33kV 100MVA Tx-III	9.5.18	07:32	E/F
42	9.5.18	17:05	WAZIRABAD 220/66kV 100MVA Tx-I	9.5.18	17:40	SPR,86
43	9.5.18	19:20	PATPARGANJ 33kV KARKADOOMA CKT-I	9.5.18	22:00	O/C
44	11.5.18	12:32	220KV OKHLA - BTPS CKT. - II	11.5.18	15:52	AT BTPS : DIST PROT, Z-1, DIST 5.88KM
45	11.5.18	12:50	GAZIPUR 66/11kV, 20MVA Tx-I	11.5.18	13:08	Y PHASE, DIFFERENTIAL, 86 ALONGWITH I/C
46	11.5.18	14:05	GAZIPUR 66/11kV, 20MVA Tx-I	11.5.18	14:28	Y PHASE DIFFERENTIAL, 86 ALONGWITH I/C.
47	12.5.18	09:17	220KV ROHINI-SHALIMARBAGH CKT-I	12.5.18	11:22	AT ROHINI : MAIN-II, 86ABC.
48	13.5.18	07:48	PARKSTREET 220/33kV 100MVA Tx-I	13.5.18	12:37	30G, 30A, 86A.
49	13.5.18	10:58	SARITA VIHAR 220/66kV 100MVA Tx-I	13.5.18	13:05	TRIP SUPERVISION RELAY.
50	13.5.18	16:35	220KV MEHRAULI - BTPS CKT. - I	13.5.18	21:21	At BTPS: Dist. Prot, Z-1, Dist-7.5 km, B-ph At Mehrauli : Dist. Prot, Z-1, Dist- 14.01 km, B-ph
51	13.5.18	16:40	220KV MEHRAULI - BTPS CKT. - II	13.5.18	18:54	At BTPS: Dist. Prot, Z-1, Dist- 9 km, R-ph At Mehrauli : Dist. Prot, Z-1, Dist -10.87 km, R-ph
52	13.5.18	16:43	NARAINA 220/33kV 100MVA Tx-III	13.5.18	17:45	E/F, 86, ABC.
53	13.5.18	16:44	220KV PAPPANKALAN-I-NARAINA CKT-I	13.5.18	19:27	At Naraina: Dist. Prot Zone -I, B phase, 86 ABC At PPK-I : Dist. Prot, Zone- I, Dist-5.840 km, B-ph, 186 A & B.
54	13.5.18	16:50	DIAL 220/66kV 160MVA Tx-I	13.5.18	19:15	86A, DIFFERENTIAL.
55	13.5.18	18:14	400KV Bamnauli-Jhatikara Ckt-I	13.5.18	18:45	AT BAMNAULI : DIST PROT, ZONE-I, RYB PHASE.
56	13.5.18	18:14	400KV Ballabgarh-Bamnauli Ckt-I	13.5.18	18:35	AT BAMNAULI : SUPPLY FAILED AT BALLABHGARH : CKT. TRIPPED.
57	13.5.18	18:19	220KV BAMNAULI - DIAL CKT-I	13.5.18	18:48	At Bamnauli: Dist. Prot, Z-I, Dist-1.422 km, Line Differential, 186 A & B. At Dial: R- phase Line Differential
58	13.5.18	18:55	220 KV PATPARGANJ - I.P. CKT-I	14.5.18	07:25	At IP: Dist. Prot, Z-I, R & Y ph, 186, 86, ABC. At PPG: Dist. Prot, Z-I, R Y- ph trip, Auto Reclose
59	13.5.18	18:58	220KV MEHRAULI - BTPS CKT. - II	14.5.18	12:32	At BTPS: Ckt did not trip At Mehrauli : O/C, E/F
60	13.5.18	19:04	VASANT KUNJ 220/66kV 100MVA Tx-II	13.5.18	20:15	86, E/F, O/C.
61	13.5.18	19:04	VASANT KUNJ 220/66kV 100MVA Tx-III	13.5.18	20:23	O/C, E/F, 86.
62	13.5.18	19:41	220KV GOPALPUR-SUBZI MANDI CKT-II	13.5.18	22:21	At Gopalpur: Dist.Protn, Y ph, Dist.- 432.3 M,
63	13.5.18	19:42	220KV GOPALPUR- MANDOLACKT-I	13.5.18	22:26	At Gopalpur: Dist.Protn, Dist.- 2.205 km.
64	13.5.18	19:43	220KVBAWANA- ROHINI-2 CKT-II	14.5.18	07:43	At Bawana: E/F, Dist.Protn, Z-I, Dist.- 5.23 km,
65	13.5.18	19:43	BAWANA 400/220kV 315MVA ICT-V	13.5.18	23:38	E/F.
66	13.5.18	19:43	BAWANA 400/220kV 315MVA ICT-VI	13.5.18	23:25	E/F

SL NO	OCCURRENCE OF BREAK-DOWN		DETAILS OF THE BREAKDOWN	TIME OF RESTORATION		REMARKS
	DATE	TIME		DATE	TIME	
67	13.5.18	19:45	220KV WAZIRABAD-GEETA COLONY CKT-I	13.5.18	23:42	At Wazirabad: Dist. Prot, Zone-II, Dist 6.57km, 86 At Geeta colony: Dist. Prot, Z-I, Dist1.592 km, 86
68	13.5.18	20:10	220KV WAZIRABAD-GEETA COLONY CKT-II	13.5.18	23:42	At Gita Colony: Dist. Prot, Zone-I, SOTF, 86. At Wazirabad: Dist. Prot, Zone-I,II, III, Auto Reclose Lock out.
69	13.5.18	20:37	220 KV GOPALPUR-WAZIRABAD CKT-2	14.5.18	07:44	At Wazirabad: Auto Reclose, Lock out, trip ph-N. At Gopalpur: CB is in off position
70	13.5.18	22:12	SHALIMAR BAGH 220/33kV 100MVA Tx-I	13.5.18	23:08	E/F, 86.
71	13.5.18	22:12	SHALIMAR BAGH 220/33kV 100MVA Tx-I	13.5.18	13:08	E/F, 86.
72	14.5.18	05:25	NARELA 220/66kV 100MVA Tx-I	14.5.18	06:25	86
73	14.5.18	05:25	NARELA 220/66kV 100MVA Tx-III	14.5.18	05:40	86
74	14.5.18	11:45	220KV MAHARANI BAGH - SARITA VIHAR CKT	14.5.18	22:12	At Sarita Vihar: Dist. Prot, Dist-6.9 km. At Maharani Bagh: Dist. Prot, Dist-1.4 km, R-Ph
75	15.5.18	02:54	220KV NARELA - MANDOLA CKT-II	16.5.18	21:27	At Narela: Dist Prot,dist.15.6Kms. , E/F. At Mandola: Dist Prot, Dist. 2.46 km.
76	15.5.18	11:20	220 KV GOPALPUR-WAZIRABAD CKT - 1	15.5.18	11:50	AT GOPALUR : POLE DISCRIPANCY.
77	15.5.18	16:23	220KV MEHRAULI - BTPS CKT. - II	15.5.18	19:30	AT MEHRAULI : DIST PROT, ZONE-I, DIST 1.8KM
78	16.5.18	02:50	400KV Mandola-Bawana Ckt-I	16.5.18	04:55	At Bawana: Dist. Prot, Z-I, C-N -Ph At Mandola: Dist. Prot, Dist-5.819 Kms
79	16.5.18	02:50	400KV Bamnauli-Jhatikara Ckt-I	16.5.18	03:48	At Bamnauli: Dist. Prot, Dist.5.618Km.
80	16.5.18	02:50	400KV Ballabgarh-Bamnauli Ckt-I	16.5.18	03:40	AT Ballabgarh : Ckt. tripped At Bamnauli: Ckt did not trip.
81	16.5.18	02:54	220KV NARELA - MANDOLA CKT-I	16.5.18	06:41	At Mandola: Dist Prot, Z-III, Dist-32.5Kms, R-Ph. At Narela: Supply failed
82	16.5.18	02:57	220KV WAZIRABAD - MANDOLA CKT-I	16.5.18	03:52	At Mandola: Dist. Prot, Dist-14.65 Kms, Y-B-Ph. At Wazirabad: Supply failed
83	16.5.18	02:57	220KV WAZIRABAD - MANDOLA CKT-II	16.5.18	03:58	At Mandola: Dist. Prot, Dist-14.49 Kms, Y-B-Ph At Wazirabad: Supply failed
84	16.5.18	02:57	220KV WAZIRABAD - MANDOLA CKT-III	16.5.18	03:59	At Mandola: Dist. Prot, Dist-14.62 Kms, Y-B-Ph ,Z-I At Wazirabad: Supply failed.
85	16.5.18	02:57	220KV WAZIRABAD-GEETA COLONY CKT-I	16.5.18	06:06	At Wazirabad: Dist Prot, Z-I, B-Ph, SOTF. At Geeta Colony: Dist Prot,Z-II,R-Ph, E/F
86	16.5.18	02:57	220KV WAZIRABAD-GEETA COLONY CKT-II	16.5.18	06:06	At Wazirabad: Dist Prot, Z-I, R-Ph. At Geeta Colony: E/F, SOTF.
87	16.5.18	02:57	220KV GEETA COLONY- PATPARGANJ CKT-I	16.5.18	03:35	At Patparganj: 86ABC. At Geeta Colony: Did not trip.
88	16.5.18	02:57	220KV GEETA COLONY- PATPARGANJ CKT -II	16.5.18	03:32	At Patparganj: O/C, trip phase 86ABC. At Geeta Colony: Did not trip.
89	16.5.18	02:57	220kv PAPPANKALAN-I-NARAINA CKT-I	16.5.18	07:40	At Pappankalan-I: Dist. Prot, R ph, Zone-II, 86ABC At Naraina: Dist. Prot, Dist-4.77 Kms, 186AB&C.
90	16.5.18	02:57	GEETA COLONY 220/33kV 100MVA Tx-II	16.5.18	03:30	I/C tripped on 30 CB auto trip.
91	16.5.18	02:57	GEETA COLONY 220/33kV 100MVA Tx-I	16.5.18	03:30	I/C-tripped on 30 CB auto trip.

SL NO	OCCURRENCE OF BREAK-DOWN		DETAILS OF THE BREAKDOWN	TIME OF RESTORATION		REMARKS
	DATE	TIME		DATE	TIME	
92	16.5.18	02:59	BAWANA 400/220kV 315MVA ICT-I	19.5.18	11:48	Tripped without indication.
93	16.5.18	03:00	220kV MEHRAULI - BTPS CKT. - II	16.5.18	11:15	At BTPS: Dist Prot., Z-II, Dist-14Kms.R-Ph, E/F. At Mehrauli: Dist Prot., Z-I, R-Ph.
94	16.5.18	03:04	220kV BAMNAULI - DIAL CKT-I	16.5.18	04:20	At Bamnauli: Dist Prot, Zone-I, Dist.9.831km, R PHASE. At Dial: DIST PROT, ZONE-I, LINE DIFFERENTIAL.
95	16.5.18	03:07	220 KV GOPALPUR-WAZIRABAD CKT-2	16.5.18	13:05	At Wazirabad: Dist Prot, Z-I, Dist-1.361 Kms, B-Ph. At Gopalpur: : CB was in off position
96	16.5.18	03:09	BAWANA 220/66kV 100MVA Tx	16.5.18	04:23	Trip ckt supervision, 86B, I/C tripped on 195C.
97	16.5.18	03:13	220kV MAHARANI BAGH - SARITA VIHAR CKT	16.5.18	08:17	At Maharani Bagh: E/F At Sarita Vihar - Supply failed
98	16.5.18	03:13	220kV MAHARANI BAGH - SARITA VIHAR CKT	16.5.18	08:17	At Maharani Bagh: E/F At Sarita Vihar - Supply failed
99	16.5.18	03:15	220kV GAZIPUR - BTPS CKT	16.5.18	12:05	At BTPS: Dist Prot, Dist-7.3Kms E/F, R-Ph. At Gazipur : CB was in off position
100	16.5.18	04:06	220kV MUNDKA-PEERAGARHI CKT-II	16.5.18	04:34	At Mundka: Dist Prot, ZONE-I. B PHASE, At Peeragarhi: Supply failed
101	16.5.18	04:06	220kV MUNDKA-PEERAGARHI CKT-II	16.5.18	04:34	AT MUNDKA : DIST PROT, ZONE-I, 195, B PHASE.
102	16.5.18	12:18	400kV Dadri - Harsh Vihar Ckt. -II	16.5.18	20:59	AT HARSH VIHAR : CVT DISAPPEAR, RYB PHASE, MAIN -I, E/F, DIST PROT, DIST 43.2KM. ZONE-I. AT DADRI : E/F.
103	17.5.18	08:49	HARSH VIHAR 400/220kV 315MVA ICT-III	20.5.18	12:01	86, DIFFERENTIAL PROT.
104	17.5.18	10:47	220kV KANJHAWALA-NAJAFGARH CKT	17.5.18	11:02	AT KHANJAWALA : DIST PROT, ZONE-I, B PHASE.
105	17.5.18	11:00	GAZIPUR 220/66kV 100MVA Tx-I	17.5.18	16:45	TRIPPED WITHOUT INDICATION.
106	17.5.18	14:11	400kV Mandola-Bawana Ckt-I	17.5.18	18:44	AT BAWANA : DIST PROT, ZONE-II & III, DIST 38.14KM. AT MANDOLA : DIST PRO, DIST 4.9KM, B PHASE, TO GROUND
107	17.5.18	14:40	MUNDKA 220/66kV 160MVA Tx-II	17.5.18	16:30	86B, REF.
108	18.5.18	13:36	220kV DSIIDC BAWANA-NARELA CKT-II	18.5.18	15:10	186
109	20.5.18	05:30	INDRAPRASTHA POWER 220/33kV 100MVA Tx-II	20.5.18	09:57	DIFFERENTIAL.
110	20.5.18	09:54	220kV WAZIRABAD - KASHMERE GATE CKT-I	20.5.18	10:43	AT KASHMIRI GATE : DIST PROT, ZONE-I. AT WAZIRABAD : DIST PROT, ZONE-II, RYB PHASE.
111	20.5.18	09:55	GEETA COLONY 220/33kV 100MVA Tx-I	20.5.18	10:15	I/C TRIPPED ON CB AUTO TRIP.
112	20.5.18	14:38	220kV MEHRAULI - BTPS CKT. - II	20.5.18	16:58	AT MEHRAULI : DIST PROT, ZONE-I, DIST 5.809KM. AT BTPS : DIST PROT, ZONE-I, DIST 13.9KM.
113	21.5.18	01:47	220 KV GOPALPUR-WAZIRABAD CKT-2	21.5.18	07:44	AT WAZIRABAD : DIST PROT, ZONE-I, DIST 1.624KM.
114	21.5.18	13:50	220KVBAWANA- ROHINI CKT-I	21.5.18	16:30	AT ROHINI : E/F, 86. AT BAWANA : CKT. DID NOT TRIP.
115	21.5.18	13:55	220kV GOPALPUR- MANDOLACKT-I	21.5.18	15:16	AT MANDOLA: DIST PROT, SOTF. AT GOPALPUR : SUPPLY FAILED.
116	21.5.18	13:58	220 KV GOPALPUR-WAZIRABAD CKT-2	21.5.18	16:15	AT WAZIRABAD : DIST PROT, ZONE-I, DIST 1.664KM.

SL NO	OCCURRENCE OF BREAK-DOWN		DETAILS OF THE BREAKDOWN	TIME OF RESTORATION		REMARKS
	DATE	TIME		DATE	TIME	
117	22.5.18	01:27	220kV Maharani Bagh- Electric Lane Ckt-II	22.5.18	02:19	AT MAHARANI BAGH : TRIPPED WITHOUT INDICATION.
118	22.5.18	01:27	220KV MAHARANI BAGH - PRAGATI CKT	22.5.18	02:15	AT MAHARANI BAGH : CKT. TRIPPED WITHOUT INDICATION.
119	22.5.18	01:27	220KV MAHARANI BAGH - SARITA VIHAR CKT	22.5.18	02:14	AT MAHARANI BAGH : DIST PROT , ZONE-I, DIST 1.6KM.
120	22.5.18	23:27	LODHI RD 220/33kV 100MVA Tx-I	23.5.18	17:26	86A, DIFFERENTIAL, R PHASE CABLE PUNTURE, I/C TRIPPED ON 86A&B.
121	25.5.18	11:53	220KV NARELA - MANDOLA CKT-I	25.5.18	13:20	AT NARELA : DIST PORT, DIST 2.8KM.
122	25.5.18	23:27	SUBZI MANDI 220/33kV 100MVA Tx-II	26.5.18	00:02	O/C, B PHASE, 86.
123	25.5.18	23:48	SUBZI MANDI 220/33kV 100MVA Tx-I	25.5.18	23:58	86, O/C.
124	26.5.18	04:20	VASANT KUNJ 66/11kV, 20MVA Tx-I	26.5.18	04:57	O/C, 86.
125	26.5.18	11:36	220KV MEHRAULI - BTPS CKT. - II	26.5.18	15:20	AT MEHRAULI : DIST PROT, ZONE-I, DIST 11.25KM. AT BTPS : DIST PROT, ZONE-I, DIST 9.2KM.
126	26.5.18	12:02	PAPPANKALAN-II 220/66kV 160MVA Tx-III	26.5.18	13:35	STR 3, 86.
127	26.5.18	14:27	400kV Ballabgarh-Bamnauli Ckt-I	26.5.18	19:17	AT BAMNAULI : DIST PROT, ZONE-I, DIST 2.98KM.
128	26.5.18	16:50	OKHLA 220/66kV 100MVA Tx-II	26.5.18	21:55	E/F.
129	26.5.18	16:50	OKHLA 220/66kV 100MVA Tx-I	26.5.18	21:55	E/F.
130	27.5.18	12:05	PAPPANKALAN-II 220/66kV 160MVA Tx-III	27.5.18	12:43	86
131	27.5.18	12:20	220KV MUNDKA-KANJHAWALA CKT	27.5.18	13:18	AT MUNDKA : DIST PROT, ZONE-I, DIST 0.75KM.
132	27.5.18	13:15	220KV MEHRAULI - BTPS CKT. - II	27.5.18	20:47	AT MEHRAULI : DIST PROT, ZONE-I, DIST 14.28KM. AT BTPS : DIST PROT, ZONE-I.
133	27.5.18	13:36	220KV DIAL- MEHRAULI CKT-I	27.5.18	20:47	AT MEHRAULI : 86, DIFFERENTIAL. AT DIAL : MAIN-I, DIFFERENTIAL.
134	27.5.18	14:48	220KV KANJHAWALA-NAJAFGARH CKT	27.5.18	15:32	AT KHANJAWALA : DIST PROT, ZONE-I, DIST 7KM.
135	27.5.18	14:53	220KV MEHRAULI - BTPS CKT. - II	27.5.18	20:47	AT MEHRAULI: 186
136	27.5.18	14:53	220KV MEHRAULI - BTPS CKT. - I	27.5.18	20:47	AT BTPS : DIST PROT, ZONE-I, DIST 4.5KM. AT MEHRAULI : CVT DISAPPEAR.
137	27.5.18	14:59	BAMNAULI 400/220kV 315MVA ICT-I	27.5.18	19:46	BUCHHOLZ.
138	27.5.18	15:02	MEHRAULI 220/66kV 160MVA Tx-I	28.5.18	11:43	186
139	27.5.18	16:05	220KV PRAGATI - I.P.CKT - I	27.5.18	16:15	86
140	27.5.18	16:06	PRAGATI 220/66kV 160MVA Tx-II	28.5.18	07:15	86, DIFFERENTIAL.
141	27.5.18	18:00	220KV MEHRAULI - BTPS CKT. - II	26.5.18	20:47	AT MEHRAULI : DIST PROT, ZONE-I, AT BTPS : DIST PROT, ZONE-I.
142	28.5.18	10:29	220KV GAZIPUR - MAHARANIBAGH CKT. -I	28.5.18	11:21	AT GAZIPUR : 86.
143	29.5.18	12:10	220KV GAZIPUR - MAHARANIBAGH CKT. -II	29.5.18	12:30	AT GAZIPUR : TRIPPED WITHOUT INDICATION.
144	29.5.18	12:48	KANJHAWALA 66/11kV, 20MVA Tx-II	29.5.18	12:57	E/F, O/C.
145	29.5.18	14:14	220KV GOPALPUR- MANDOLACKT-I	29.5.18	15:23	AT GOPALPUR : DIST PROT, DIST 1.9KM. AT MANDOLA : DIST PROT, ZONE-I, DIST 17.31KM.
146	30.5.18	00:30	220KV GAZIPUR - MAHARANIBAGH CKT. -I	30.5.18	00:50	AT GAZIPUR : POLE DISCRIPANCY.
147	30.5.18	01:05	220KV GAZIPUR - MAHARANIBAGH CKT. -I	30.5.18	18:34	AT GAZIPUR : POLE DISCREPANCY.

20 DETAILS OF UNDER FREQUENCY RELAY OPERATIONS IN DELHI POWER SYSTEM DURING THE MONTH OF MAY 2018

DATE	S. N.	TIME		Name of Grid	NAME OF AFFECTED FEEDERS	MODE	LOAD RELIEF IN MW
		OUT	IN				
				NIL			